

Xylanases of marine fungi of potential use for biobleaching of paper pulp

Chandralata Raghukumar*, Usha Muraleedharan, V. R. Gaud and R. Mishra

*National Institute of Oceanography, Dona Paula, Goa 403 004, India.
Marine Biotechnology, Goa University, Taleigao Plateau, Goa 403 206.

Abstract

Microbial xylanases that are thermostable, active at alkaline pH and cellulase-free are generally preferred for biobleaching of paper pulp.. We screened obligate and facultative marine fungi for xylanase activity with these desirable traits.

Several fungal isolates obtained from marine habitat showed alkaline xylanase activity. The crude enzyme from NIOCC isolate # 3 (*Aspergillus niger*) with high xylanase activity, cellulase-free and unique properties containing 580 U L⁻¹ of xylanase, could bring about bleaching of sugarcane bagasse pulp by a 60 min treatment at 55°C, resulting in a decrease of 10 kappa numbers and a 30% reduction in consumption of chlorine during bleaching process. The culture filtrate showed peaks of xylanase activity at acidic pH (3.5) and alkaline pH (8.5). When assayed at pH 3.5 optimum activity was detected at 50° C with a second peak of activity at 90°C. When assayed at pH 8.5 optimum activity was seen at 80°C. The crude enzyme was thermostable at 55°C for at least 4 h and retained about 60% of the activity. Gel filtration of the 50-80% ammonium sulfate precipitated - fraction of the crude culture filtrate separated into two peaks of xylanase having specific activities of 393 and 2457 U mg⁻¹ protein. The two peaks showing xylanase activities had molecular masses of 13 and 18 kDa. Zymogram analysis of xylanase of crude culture filtrate as well as the 50-80% ammonium sulphate - precipitated fraction showed two distinct xylanase activity bands on native PAGE. The crude culture filtrate also showed moderate activities of β-xylosidase and α-L-arabinofuranosidase which could act synergistically with xylanase in attacking xylan. This is the first report showing potential application of crude culture filtrate of a marine fungal isolate possessing thermostable, cellulase-free alkaline xylanase activity in biobleaching of paper pulp.

Key Words

Marine fungi, alkaline, thermostable, cellulase-free xylanase, biobleaching, *Aspergillus niger*

*Corresponding author Email: lata@nio.org

Telephone: 91-0832-2450480; Fax: 91-0832-2450602

Introduction

The paper and pulp industry is a potential source of major pollution, generating large volumes of intensely colored effluent for each metric ton of paper produced. In the production of paper, residual lignin from wood pulp is chemically liberated by using chlorine bleaching. Elemental chlorine reacts with lignin and other organic matter in the pulp forming chlorinated compounds that are extracted with alkali. Only about 40-45% of the original weight of the wood goes into paper production and therefore the effluent that comes out is rich in organic matter [2]. The effluents have a high BOD and COD, chlorinated compounds measured as adsorbable organic halides, chlorinated lignin derivatives such as chlorolignols, dioxins and sulfur compounds. Some of these compounds are carcinogenic, toxic and recalcitrant to degradation and are known as persistent organic pollutants .

In response to stricter government rules regarding pollution control and public awareness, the paper mills are substituting elemental chlorine bleaching with ozone and oxygen delignification and hydrogen peroxide bleaching. Biobleaching is an important alternative to reduce the use of chlorine and chlorine compounds in the bleaching process. Biological bleaching is carried out using white-rot fungi to degrade residual lignin in the pulp by using ligninolytic enzymes such as manganese peroxidase and laccase or by using hemicellulolytic enzymes such as xylanases [5].

Xylan is the predominant hemicellulose in both hardwoods and softwoods that are used for paper making. The cellulose fibres are protected by lignin and hemicellulose. The bond between lignin and hemicellulose is primarily between lignin and xylan which can be removed by xylanase. Thus xylanase is the most important hemicellulase for this reason. Once this layer of hemicellulose is removed, the lignin layer is easily available for the degradative action of the ligninolytic enzymes [9]. In addition, during chlorine bleaching the exposed lignin layer thus requires a lesser amount of chlorine for achieving the required

brightness. As a result, reduced amounts of chlorinated compounds of lignin are discharged as effluent, causing less environmental pollution and damage.

For pulp treatment, xylanase must be free of cellulase. Xylanase treatment is carried out after the initial alkali extraction of the pulp at high temperatures and therefore the xylanase active at alkaline pH and stable at high temperature and active in the presence of residual sulfated lignin compounds is highly desirable [28]. The effluent discharged after alkaline extraction of wood pulp containing residual sulfated lignin is called black liquor. The pulp going for further enzymatic treatment contains some traces of this black liquor and might be inhibitory to the enzyme. Therefore, xylanase active in the presence of trace amounts of black liquor is desirable [28].

A few terrestrial fungi having cellulase-free alkaline xylanase activity are reported [3 and references therein]. The use of xylanases derived from fungi occurring in the alkaline pH environment of marine habitats has received little attention. Our objective was therefore to explore the potential of these fungi as a source of alkaline xylanases suitable for use in the biobleaching of paper pulp.

Material and Methods

Isolation and initial screening of fungi

Fungi were obtained from detritus of decaying mangrove leaves and other plant parts from the mangrove swamps of Chorao Island, Goa, India and from calcareous material from 850 m depth in the Bay of Bengal. Isolation of fungi was carried out as described earlier by surface sterilization of detritus using 0.5% sodium hypochlorite solution for 2 min, followed by two washings with sterile sea water [22]. The detritus was plated on corn meal agar medium (Himedia Pvt. Ltd, Mumbai) prepared with half strength sea water and supplemented with 0.05 g of streptomycin sulfate and 10,000 units of sodium benzyl penicillin in 100 ml of medium to inhibit bacterial growth. Fungi thus obtained were initially screened for xylan-degrading activity by growing them on basal medium containing 1% oat spelts xylan (Sigma Chemical Co., St Louis, MO, U.S.A.) at 28-30°C. The basal medium contained the following ingredients L⁻¹: 2 g KH₂PO₄, 1.45 g

MgSO₄·7H₂O, 0.132 g CaCl₂·2H₂O, 1 mg thiamine-HCl, 28 ml of 1.2 mM ammonium tartrate and 18 g agar. The medium was prepared with distilled water and adjusted to pH 4.5 with 20 mM sodium acetate buffer or to pH 8.5 with 20 mM glycine-NaOH buffer as required. As these isolates were obtained from marine habitats, production of xylan-degrading enzymes under marine conditions was tested, wherein the same media were prepared in natural half-strength sea water at a salinity equivalent to 15 parts per thousand (which is the average salinity in mangrove swamps) or 30 parts per thousand for growing the deep sea isolate. Clearance zones produced around the fungal colonies in these media identified the isolates as xylanase positive [14]. The fungi were identified using conventional taxonomic identification keys [7, 17].

Production of xylan-degrading enzyme

The xylan-clearing cultures were grown at 30° C up to 7 days in basal medium (pH 4.5 or 8.5) containing 1% oat spelts xylan suspended in natural half strength or full strength sea water or distilled water. Production of xylanase in different xylan sources such as breakfast oats (Commercial preparation), birchwood xylan (Sigma Chemicals, USA) and sugacane bagasse powder (supplied by Pudumjee Paper Mills Ltd, Pune, India) suspended in distilled water or half-strength sea water was also carried out with some of the isolates. The cultures were filtered through Whatman GF/F filters, the filtrate centrifuged at 9,000xg for 15 min at 5° C and the clear supernatants used for enzyme assay. All the assays were carried out in triplicate and repeated at least twice for confirmation. Xylanase from one of the isolates with highest activity was partially purified and characterized. For this purpose, the culture was grown in basal medium prepared with half strength sea water containing oat spelt xylan.

Enzyme assays

Xylanase activity was assayed using 3,5-dinitrosalicylic acid (DNSA) to measure the amount of xylose-equivalent reducing sugars liberated from oat spelts xylan (Sigma Chemicals, USA). The enzyme preparation, containing up to 10 µg crude enzyme protein was used for measuring the activity at pH 3.5 (50 mM sodium

acetate buffer) or at pH 8.5 (20 mM glycine-NaOH buffer) at 50°C for 30 min. One unit of activity (U) is defined as the amount of enzyme capable of releasing reducing sugars equivalent to one μ mole of xylose per minute under the conditions described [21]. was also performed. All results are averages of triplicate measurements. Protein concentrations were measured by the method of Lowry *et al.* [19] using bovine serum albumin as the standard.

β -D-xylosidase and α -L-arabinofuranosidase activities in the crude culture filtrate of one of the isolates were assayed at 50°C at pH 4 in acetate buffer using p-nitrophenol- β -D-xylopyranoside and p-nitrophenol- α -L-arabinofuranoside, respectively. The reaction was terminated by adding glycine-NaOH buffer adjusted to pH 10.8 and the absorbance of p-nitrophenol released was read at 430 nm [27]. One unit of activity (U) is defined as the amount of enzyme capable of releasing one μ mole nitrophenol per minute under the conditions described. Cellulase activity was determined according to the standards of the International Union of Pure and Applied Chemistry [13].

Effect of black liquor on xylanase activity

Black liquor (obtained from Pudumjee Paper Mills Ltd, Pune, India) at final concentrations of 0.1 and 0.2 % was added to enzyme reaction mixture containing buffer and oat spelts xylan. Xylanase activity was measured after incubation for 30 min as described above.

Characterization of the enzyme

For studying the properties of xylanase, the culture filtrates from cultures grown in oat spelts xylan medium prepared in half strength sea water were used. The effect of pH on the reaction was studied in the presence of different buffers. The buffers used were 50 mM citrate (or acetate) buffer (pH 2.5 to 5.5), 100 mM phosphate buffer (pH 6.5 to 7.5) and 25 mM borate buffer (pH 8.5 to 10.5). The reaction of dinitrosalicylic acid (DNSA) with known amount of xylose at different pHs was also carried out to check the sensitivity of the DNSA assay to pHs. The effect of temperature on the reaction was assessed by incubating the reaction

mixtures (pH 3.5) at different temperatures in the range of 30 to 100°C. Thermostability was monitored by incubating the enzyme at pH 3.5 for the specified period at different temperatures followed by rapid cooling in ice and carrying out the routine assay at 50° C and pH 3.5. The enzyme blanks and substrate blanks were similarly treated at respective pHs and temperatures for the same length of time and the absorbance was subtracted from that of reaction mixture to arrive at the actual enzyme activity.

Purification of enzyme

The crude culture filtrate was brought to 50-80% saturation with ammonium sulfate. The pellet obtained after centrifugation was suspended in a minimum volume of 50 mM acetate buffer (pH 4.5) and loaded on a 130 ml bed volume Sephadex G-100 column at a flow rate of 20 ml h⁻¹. The protein was eluted with acetate buffer and 3 ml fractions were collected. The fractions were monitored at 280 nm for protein and assayed as above for xylanase activity. The active fractions were pooled and concentrated by saturating to 80% with ammonium sulphate. All the above operations were carried out at 4° C in a cold room.

Gel electrophoresis

Polyacrylamide gel electrophoresis on native gels (10% separating gels) was carried out in Tris-glycine buffer as described by Sambrook *et al.* [26] and the gels subjected to silver staining to visualize the protein bands.

For *in situ* detection of the enzyme, electrophoresis was carried out at 8° C on native composite gels of 10% polyacrylamide containing 1% xylan. The gels were then incubated in 50 mM acetate buffer (pH 4.5) for 30 min at 50° C. After a further incubation for 30 min (at room temperature) in a 0.1% Congo red solution, the gels were destained in 1 M NaCl until clearance bands of xylanase activity were obtained [20]. We found that the bands were more prominent when the gels were finally transferred into 50 mM acetate buffer (pH 4.5) for a few minutes.

Estimation of molecular weight

Gel filtration of the protein standards alcohol dehydrogenase (150 kDa), bovine serum albumin (67 kDa), carbonic anhydrase (29 kDa), ribonuclease A (13.7 kDa) and cytochrome C (12.4 kDa) was carried out on the Sephadex G-100 column as described above. The void volume was calculated using blue dextran as marker and the calibration curve was prepared .

All the chemicals used in this study were either from Sigma Chemical Co. (St Louis, MO, USA) or of analytical grade from other reputed companies.

Pulp treatment and determination of kappa number

The pulp from sugarcane after extraction of sugar is called sugarcane bagasse and is used alone or mixed with wood chips for making paper. The screened, unbleached pulp from sugarcane bagasse (10 % consistency) was incubated with crude culture filtrate at a ratio of 10 g pulp to 100 ml enzyme (containing 58 U of xylanase, 0.32 U of α -L-arabinofuranosidase and 26 U β -D-xylosidase activity) at 55° C for 1 h. After incubation, the pulp suspension was filtered through a Whatman No.1 filter paper and air-dried. The delignification was measured as change in kappa number which is indicative of the extent of delignification and bleachability of the pulp. The kappa number is the volume of 0.1N potassium permanganate solution consumed by 1 g of moisture-free pulp under the conditions described in the standard procedure of TAPPI (Technical Association of Paper and Pulp Industries) Test method T236-cm-85 [1]. The kappa number x 0.15 gives the percentage of residual lignin.

Results

Five marine fungi out of 6 screened showed substantial alkaline xylanase activity (Table 1). Out of these, the isolates # 3, 9 and 289 showed xylanase activity when grown in a variety of xylan-containing substrates (Table 2). The crude enzyme preparation from the high xylanase-producing isolate # 3 showed optimum activity at pH 3.5 with a second peak of activity at pH 8.5 where about 40% of the activity was measurable (Fig. 1). There was no effect of pHs on

estimation of reducing sugars by the DNSA assay. The optimum temperature for the enzyme activity was 50° C and a second peak of activity was at 90° C when measured at pH 3.5 whereas when assayed at pH 8.5, maximum activity was observed at 80°C (Fig. 2). The activation energy up to 50° C was about 16 kJ mol⁻¹ when the assay was carried out at pH 3.5. Thermostability studies in the absence of substrate showed that the enzyme retained 60-65% of its activity after 1-4 h incubation at 55° C (Fig. 3). At 60° C it retained only 28% of the activity at the end of 2 h and incubation at 70°C inactivated the enzyme within 1h.

Xylanase activity of isolate # 9 was optimum at pH 4.5 with another peak at pH 8.5 (Fig. 1). The optimum temperature for the activity was at 50°C (Fig. 4). Thermostability of the enzyme showed that only <40% of the maximum activity was retained between 1-3 h incubation at 55°C (Fig. 5).

As isolate # 3, obtained from mangrove detritus showed the best thermostability, it was studied further. Xylanase production was maximum at 15 ppt salinity which is the normal salinity in its natural environment (Fig. 6). About 95-98% of conidia of this fungus germinated within 6 h in 1% glucose solution prepared with half-strength as well as full strength sea water and also in distilled water. The fungal biomass in basal medium prepared with distilled water, half-strength and full-strength sea water was 99, 87 and 157 mg respectively (dry weight in 20 ml medium on day 7). It also showed good growth on plain powdered sugarcane bagasse suspended in distilled water or half-strength seawater.

The crude culture filtrate of the isolate # 3 was tested for its biobleaching potential. The culture filtrate of this isolate grown on oat spelts xylan or sugarcane bagasse containing 580 U L⁻¹ of enzyme could bleach sugarcane bagasse pulp by a 60 min treatment at 55° C, resulting in a 30% reduction in chlorine consumption and a 10 point reduction in the kappa numbers (trials conducted independently by Pudumjee Paper Mills Ltd., Pune and Seshasayee Paper Mills Pvt. Ltd., Chennai, India). The unbleached bagasse showed 48 kappa number and the enzyme-treated pulp showed a kappa number of 38. The

drop in kappa number after biobleaching indicates reduction in chlorine consumption during further bleaching of the pulp.

No cellulase activity either on CMC-cellulose or filter paper was detected in culture filtrate from isolate # 3. β -xylosidase activity in the filtrate was optimum at pH 4 and 70°C with about 260 U L⁻¹ and α -arabinofuranosidase activity was optimum at pH 4 and 60°C with about 50 U L⁻¹ produced in the filtrate of a 4-day old culture. About 79 and 76% of the xylanase activity could be detected when the enzyme was assayed in the presence of 0.1 and 0.2% black liquor respectively.

Partial purification of xylanase from isolate # 3

Ammonium sulfate fractionation of the culture filtrate yielded maximum xylanase activity at 50-80% saturation (Table 3). Two bands of xylanase activity in the crude (lane 1 & 2) and 50-80% ammonium sulfate fraction (lane 4 & 5) and only one band of activity (lane 3) in 0-35% fraction (Fig.7) were seen on polyacrylamide gel containing 1% xylan.

The elution profile of the 50-80% ammonium sulfate fraction subjected to column chromatography on a Sephadex G-100 matrix showed three distinct protein peaks, two of which had xylanase activity (Fig. 8). The active fractions in each peak were pooled, concentrated by saturating to 80% with ammonium sulfate and designated Xyl I and Xyl II. The Xyl I and Xyl II fractions showed specific activities of 393 and 2457 U mg⁻¹ protein, respectively (Table 3).

The xylanase-active peaks on Sephadex G-25 matrix were found to correspond to molecular weights of 18 and 13 kDa, respectively. These results indicate successful separation of two distinct xylanases. Purification by almost 104-fold for Xyl I and 647-fold for Xyl II activity with respect to the crude extract was achieved.

Degradation products of xylanase activity

The degradation products of oat spelts xylan incubated with xylanase from 50-80% ammonium sulfate fractions for 30 min at 50°C and 80°C at pH 3.5 and 8.5

were identified by paper chromatography as a mixture of xylose, xylobiose, xylotriose, xylotetrose and xylopentose (Fig. 9) confirming the xylanase to be an endoxylanase type. The presence of xylose also indicated β -xylosidase activity.

Discussion

The best xylanase-producing isolates were not obligate marine but facultative marine fungi (*A. niger* and *A. ustus*). This was not surprising as many terrestrial species of fungi appear to have adapted themselves to marine conditions and play an important role therein. Such “facultative marine fungi” [17] have been associated with coastal marine plant litter ecosystems [6, 10, 25]. Novel secondary metabolites have been isolated from marine isolates of terrestrial species of fungi [15]. Our present studies indicate that facultative marine fungi may produce enzymes with unique properties. The facultative marine nature of the strain of *Aspergillus niger*, NIOCC isolate # 3, obtained from mangrove leaf detritus after rigorous surface sterilization is further proved by the fact that the conidia showed germination in sea water and produced higher fungal biomass in sea water medium. Xylanase production was also seen in media prepared with natural sea water.

A number of species of *Aspergillus* isolated from terrestrial habitats are known to produce xylanase in acidic media and also show activity under acidic assay conditions [4,27]. Our marine isolate of *A. niger* produced xylanase in acidic as well as in alkaline media and the enzymes thus produced showed good activity at both acidic and alkaline pH. An extremely high specific activity (2457 U mg^{-1} protein for Xyl II) appears to be a novel feature of the enzyme from this isolate [24]. High specific activity has also been reported for a xylanase from *Aureobasidium pullulans* (de Barry) Arnaud, which produces low molecular weight extracellular xylanase having a specific activity of 2000 U mg^{-1} protein [18].

Aspergillus niger isolated from a terrestrial source was reported to produce endoxylanases I and II with low molecular weights of ca. 13 kDa [11]. Our strain of *A. niger* produced two endoxylanases having molecular masses of

13 and 18 kDa. The two endoxylanases of the terrestrial isolate of *A. niger* showed only one temperature optimum of 45° C and pH optima of 6.0 and 5.5 [11]. Xylanase activity in the crude culture filtrate of our isolate showed pH optimum around 3.5 with a second peak of activity at pH 8.5. When assayed at pH 3.5 it showed a temperature optimum at 50° C and a second peak of activity at 90° C. At pH 8.5 the enzyme had optimum activity at 80° C. Up to 40° C the energy of activation for xylanase I was $30.4 \pm 12.0 \text{ kJ mol}^{-1}$ while that of xylanase II was $38.8 \pm 8.6 \text{ kJ mol}^{-1}$ for the terrestrial isolate of *A. niger* [11] while for our isolate, the activation energy up to 50° C was only about 16 kJ mol^{-1} . The terrestrial isolate did not produce xylose on hydrolysis of xylan. On the contrary, the 50-80% ammonium sulfate fraction on reaction with oat spelts xylan yielded xylose, besides xylobiose, xylotriose, xylotetrose and xylopentose by hydrolysis of oat spelts xylan, confirming the presence of endoxylanase [20]. Xylose production might also be due to the activity of β -xylosidase in our marine isolate.

The stability of the enzyme for nearly 4 h at 55° C (Fig. 3)) suggests that a crude enzyme solution could be used directly for bleaching of the cooked paper pulp without substantially bringing down the temperature of the pulp. Crude culture filtrate of another strain of *A. niger* was reported to bleach Kraft pulp by virtue of its xylanolytic enzymes [8]. *Thermomyces lanuginosus* which produces cellulase-free exo-and endo-xylanase could bring down kappa number of hardwood pulp from 20 to 17 and 13 respectively, when 100 U and 300 U of xylanase g^{-1} pulp were used [29]. About 50 U of xylanase from *Thermomonospora fusca* reduced the kappa number of softwood Kraft pulp from 18.5 to 13.4 within 2h at 70° C [5]. About 100 ml of the crude culture filtrate of our strain having 58 U of endoxylanase, 26 U of β -xylosidase and 0.32 U of α -L-arabinofuranosidase activities, on incubation with 10 g of sugarcane bagasse pulp reduced the kappa number from 48 to 38 within 1 h of incubation at 55° C. A crude culture filtrate having a xylan-degrading enzyme system (devoid of cellulase activity) that could be used in the biobleaching process would eliminate steps involved in purification of the enzyme(s), thus bringing down the cost involved in their production and increase the economic viability.

Presence of multiple xylanases has been reported in a number of fungal and bacterial isolates from terrestrial sources [30]. A species of *Cephalosporium* produced two xylanases varying in their pI_s , K_m constants and molecular weights [16]. Similarly, a *Bacillus* species also produced two xylanases differing in their temperature and pH optima [12]. Presence of two pH and temperature optima, differing specific activity of the two peaks of xylanase activity separated on gel filtration suggest the presence of multiple xylanases in our isolate NIOCC # 3 too. The total yield of Xyl I and Xyl II separated by column chromatography was not very high, largely because the focus was on elimination of other minor xylanase activities in the ammonium sulphate fractionation step. Such situations are commonly reported in the literature [20,11] wherein multiplicity of xylanase activity has been encountered.

We have earlier reported fungi from marine habitats capable of producing lignin-modifying enzymes [22,23]. The co-production of endoxylanase, β -D-xylosidase and α -L-arabinofuranosidase in a cellulase-free enzyme system by isolate # 3 from marine habitats with a potential in biobleaching, indicates the importance of marine fungi in biotechnological applications. Although the xylanase production is not very high in this isolate, due to its novel properties it is worthwhile to overproduce the enzyme through various approaches.

Acknowledgements

We thank Ms Gauri Rivonkar and Ms Shilpa Kamat for the excellent laboratory assistance rendered at N.I.O. Our grateful thanks to Pudumjee Paper Mills Ltd., Pune, India and Seshasayee Paper Mills, Chennai for conducting bleaching trials with our enzyme. This is NIO's contribution No.

References

1. Anonymous (1988) Kappa number of pulp-T 236- cm- 85 In TAPPI Test Methods, TAPPI Press, Atlanta, GA, Vol. 1. pp 1-3
2. Ali M, Sreekrishnan TR (2001) Aquatic toxicity from pulp and paper mill effluents: a review. *Adv Environ Res* 5: 175-196
3. Anthony T, Chandra Raj K, Rajendran A, Gunasekaran P (2003) High molecular weight cellulase-free xylanase from alkali-tolerant *Aspergillus fumigatus* AR1. *Enz Microbial Technol* 32: 647-654
4. Biswas SR, Jana SC, Mishra AK, Nanda G (1990) Production, purification and characterization of xylanase from a hyperxylanolytic mutant of *Aspergillus ochraceus*. *Biotechnol Bioeng* 35: 244-251
5. Casimir-Schenkel J, Davis S, Fiechter A, Gygin B, Murray E, Perrolax J, Zimmermann W (1995) Pulp bleaching with thermostable xylanase of *Thermomonospora fusca*. US Patent No. 5407827, 18.04.95
6. Cundell AM, Brown MS, Stanford R, Mitchell R (1979) Microbial degradation of *Rhizophora mangle* leaves immersed in the sea. *Estuar Coastal Shelf Sci* 9: 281-286
7. Domsch KH, Gams W, Anderson TH (1980) *Compendium of soil fungi*. Academic Press, London.
8. Duarte JC, Maximo C, Dias A, Costa-Ferreira M, Vasconcelos L, Morgado MJ (1993) Biobleaching of kraft pulp by *Aspergillus niger* xylanolytic enzymes. Proc Symp on Lignin: biodegradation and transformation. Lisbon, Portugal, 211-214
9. Eriksson KE (1993) Concluding remarks: Where do we stand and where are we going? Lignin biodegradation and practical utilization. *J Biotech* 30: 149-158
10. Fell JW, Newell SY (1981) Role of fungi in carbon nitrogen immobilization in coastal marine plant litter systems. In: Wicklow, DT, Carroll GC (eds) *The Fungal Community*. Marcel Dekker Inc., New York, pp. 665-678
11. Frederick MM, Kiang CH, Frederick JR, Reilly PJ (1985) Purification and characterization of endo-xylanases from *Aspergillus niger*. I. Two isozymes active on xylan backbones near branch points. *Biotechnol. Bioeng* 27: 525-532
12. Gessesse A (1998) Purification and properties of two thermostable alkaline xylanases from an alkaliphilic *Bacillus* sp. *Appl Environ Microbiol* 64:3533-3535

13. Ghosh TK (1987) Measurement of cellulase activities. *Pure Appl Chem* 59: 257-268
14. Haack S (1992) Description of a new species of *Cytophaga* and characterization of its xylan-degrading enzyme system. Ph. D. thesis. Michigan State University, East Lansing, MI, USA.
15. Jensen PR, Fenical W (1999) Exploring marine fungi as a source of novel pharmaceutical leads. Abstract in The 7th International Marine and Fresh water Mycology Symposium, Hong Kong, p. 55
16. Kang MK, Maeng PJ, Rhee YA (1996) Purification and characterization of two xylanases from alkalophilic *Cephalosporium* sp. Strain RYM-202. *Appl Environ Microbiol* 62: 3480-3482
17. Kohlmeyer J, Kohlmeyer E (1979) *Marine Mycology, The Higher Fungi*. Academic Press, New York, pp. 690
18. Leathers TD (1986) Color variants of *Aureobasidium pullulans* overproduce xylanase with extremely high specific activity. *Appl Environ Microbiol* 52: 1026-1030
19. Lowry OH, Rosebrough NJ, Farr AL, Randall RJ (1951) Protein measurement with Folin Phenol reagent. *J Biol Chem* 193: 265-275
20. Morales PJ, Madarro J, Perez-Gonzalez A, Sendra JM, Pinaga F, Flors A (1993) Purification and characterization of alkaline xylanases from *Bacillus polymyxa*. *Appl Environ Microbiol* 59: 1376-1382
21. Nakamura S, Wakabayashi K, Nakai, R, Aono R, Horikoshi K (1993) Purification and some properties of an alkaline xylanase from alkaliphilic *Bacillus* sp. Strain 41M-1. *Appl Environ Microbiol* 59: 2311-2316
22. Raghukumar C, Raghukumar S, Chinnaraj A, Chandramohan D, D'Souza TM, Reddy CA (1994) Laccase and other lignocellulose modifying enzymes of marine fungi isolated from the coast of India. *Bot Mar* 37: 515-523
23. Raghukumar C, D'Souza TM, Thorn RG, Reddy CA (1999) Lignin-modifying enzymes of *Flavodon flavus*, a basidiomycete isolated from a coastal marine environment. *Appl Environ Microbiol* 65: 2103-2111
24. Raghukumar C, Muraleedharan UD (2000) A process for production of xylan-degrading enzymes. Indian Patent No. NF 30/2000, 31.03.2000

25. Raghukumar S, Sharma S, Raghukumar C, Sathe-Pathak V, Chandramohan D (1994) Thraustochytrid and fungal component of marine detritus. IV. Laboratory studies on decomposition of leaves of the mangrove *Rhizophora apiculata* Blume J Exp Mar Biol Ecol 175: 227-242.
26. Sambrook J, Fritsch EF, Maniatis T (1989) *Molecular Cloning. A Laboratory Manual*. 2nd edn. Cold Spring Harbor Laboratory Press, USA.
27. Smith DC, Wood TM (1991) Xylanase production by *Aspergillus awamori*. Development of a medium and optimization of the fermentation parameters for the production of extracellular xylanase and β -xylosidase while maintaining low protease production. Biotechnol Bioeng 38: 883-890
28. Srinivasan MC, Rele MV (1995) Cellulase-free xylanases from microorganisms and their application to paper and pulp biotechnology: an overview. Indian J Microbiol 35: 93-101
29. Wizani W, Esterbauer H, Gomes J (1993) Preparation of xylanase by cultivating *Thermomyces lanuginosus* DSM 5826 in a medium containing corn cobs. US Patent No. 5183753 of 02.02.1993
30. Wong KK, Tan Y, Saddler JN (1988) Multiplicity of β -1,4-xylanase in microorganisms: function and applications. Microbiol Rev 52: 305-317

Table 1. Xylanase production by marine fungi (U L⁻¹)

Isolate #	Identity	Source	Growth at pH 4.5		Growth at pH 8.5	
			Assayed at pH 3.5	Assayed at pH 8.5	Assayed at pH 3.5	Assayed at pH 8.5
3	<i>Aspergillus niger</i>	Mangrove detritus	737±13	857±27	745±15	864±10
289	Unidentified ascomycete	Mangrove detritus	613±4	751±19	594±18	654±21
312	<i>Flavodon flavus</i>	Decaying seagrass from a coral lagoon	177±18	144±10	207±15	144±17
313	<i>Gongronella</i> sp	Mangrove sediment	282±10	237±16	351±20	237±30
321	<i>Halosarpheia ratnagiriensis</i>	Mangrove wood	57±10	60±5	45±7	69±9
9	<i>Aspergillus ustus</i>	Calcareous sediment from 860 m depth in the Arabian Sea	2924±40	1533±27	nd	nd

Nd= no data. U= unit of enzyme expressed as μmol xylose equivalent released min^{-1} .

Table 2. Effect of substrate and salinity on the production of xylanase (U L⁻¹) by selected isolates

Substrate	Isolate #	Basal medium prepared with distilled water	Basal medium prepared with half-strength sea water*
Sugarcane bagasse	3	1356 ±178	1245 ± 377
	9	1295±101	1131±97
	289	1345±77	1395±177
Commercial breakfast oats	3	958 ± 75	625 ± 65
	9	789±79	534±50
	289	702±23	709±37
Oat spelts xylan	3	1624 ± 7	1100 ± 41
	9	876±45	1297±25
	289	699±32	729±41
Birchwood xylan	3	1645 ± 58	1369 ± 138
	9	790±101	502±87
	289	753±85	637±49

U= unit of enzyme expressed as $\mu\text{mol xylose equivalent released min}^{-1}$; *= equivalent to 15 ppt salinity which is the normal salinity in the mangrove ecosystem.

Table 3. Ammonium sulphate fractionation of culture filtrate and further purification of xylanase from the isolate # 3.

Fraction	Total activity (U)	Specific activity (U mg protein⁻¹)
Crude culture filtrate	48.8	3.8
0-35%	15.3	1.9
35-50%	2.6	5.8
50-80%	20.1	18.9
80-90%	2.0	5.8
Sephadex G-100 fraction (Xyl I)	6.1	393.3
Sephadex G-100 fraction (Xyll I)	2.4	2457.0

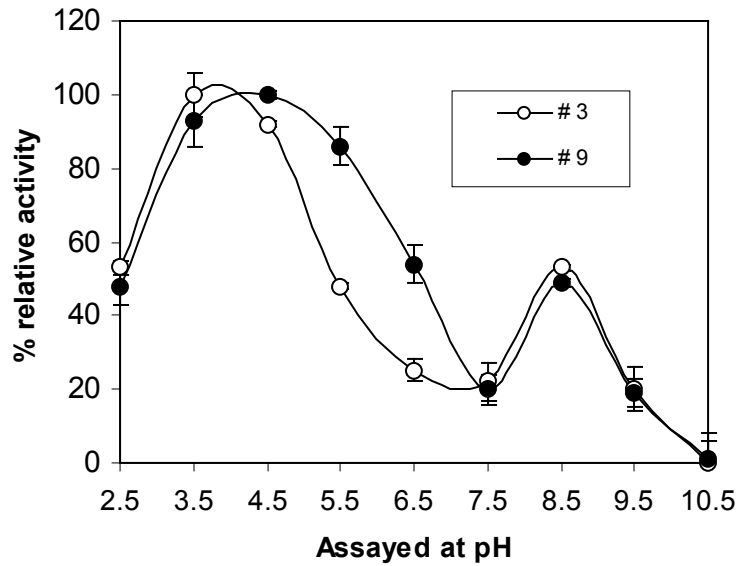


Fig. 1. Effect of assay pH on xylanase activity of culture filtrates from isolates # 3 and 9. The enzyme was assayed at 50°C in a range of pH 2.5 to 10.5 as described in Materials and Methods. Bars show standard deviation.

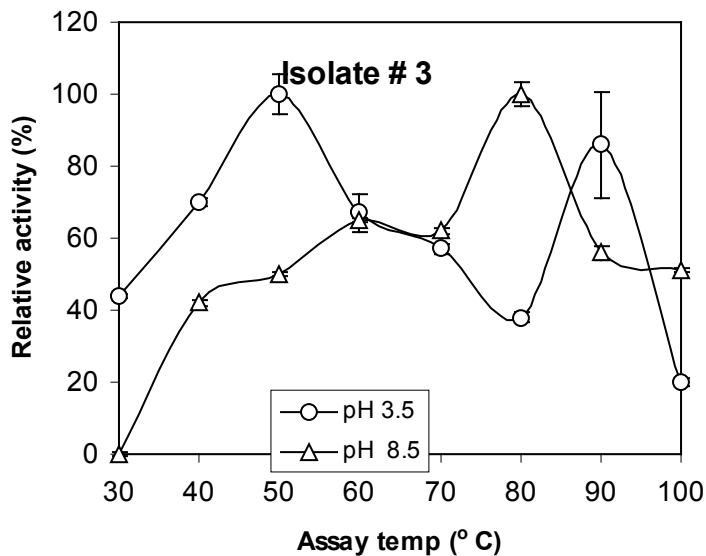


Fig. 2. Effect of assay temperature on xylanase activity in culture filtrate of isolate #3. The enzyme activity was assayed at pH 3.5 and 8.5 at temperatures ranging from 30 to 100°C for 30 min. The enzyme blank and substrate blanks were also incubated at these temperatures and the reducing sugars released were estimated using DNSA reagent. The values for the blanks were subtracted from the reaction mixture to arrive at the enzyme activity. Bars show standard deviation

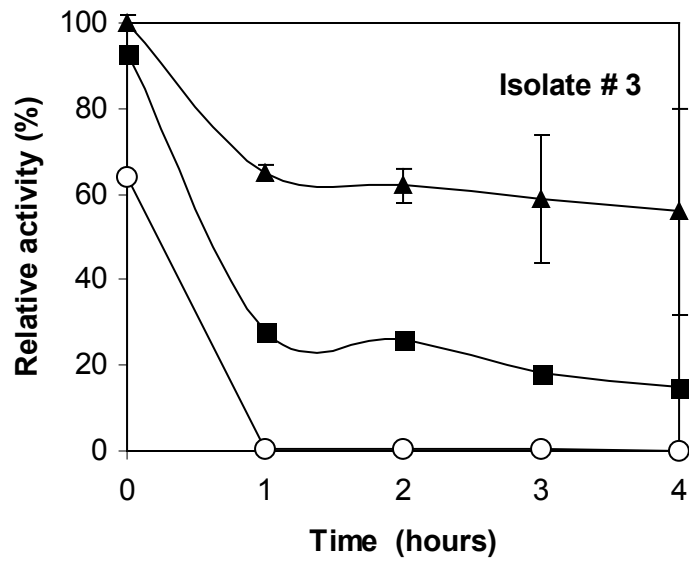


Fig. 3. Effect of temperature on xylanase stability in culture filtrate of isolate # 3. The filtrate was incubated at different temperatures for various time periods followed by rapid cooling and measuring the residual activity by incubating with the substrate. ▲ 55o C, ■ 60o C, ○ 70o C. Bars show standard deviation.

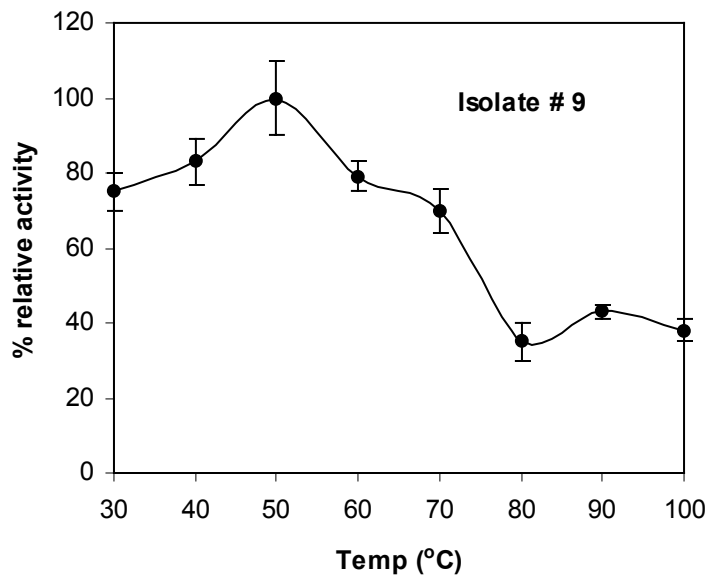


Fig. 4. Effect of assay temperature on the xylanase activity of culture filtrate the isolate # 9. Bars show standard deviation.

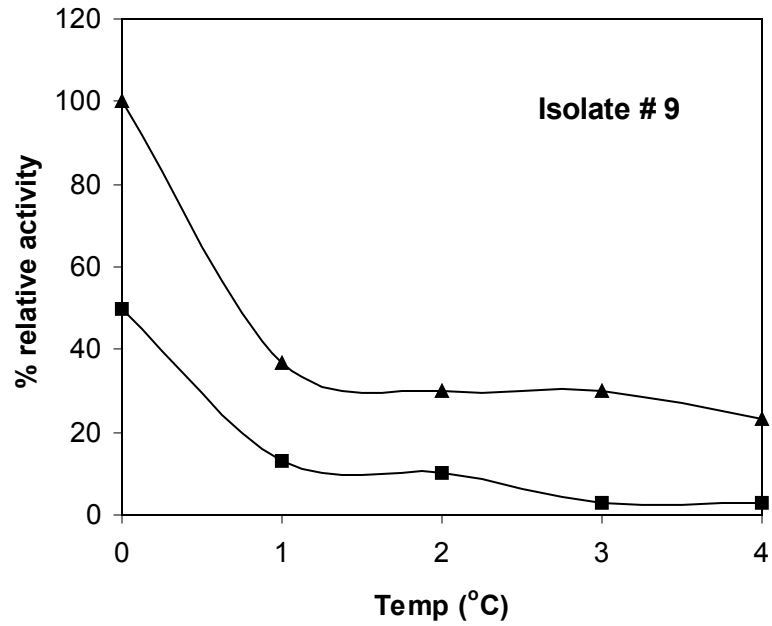


Fig. 5. Effect of temperature on xylanase stability in culture filtrate of the isolate # 9. The filtrate was incubated at different temperatures, ▲ 55° C, ■ 60° C for various time periods followed by rapid cooling and measuring the residual activity by incubating with the substrate and buffer at 50°C for 30 min.

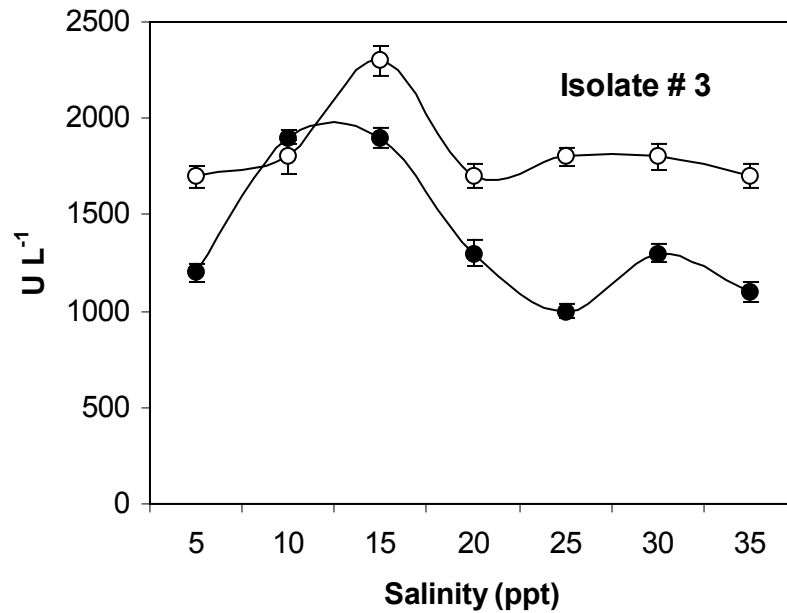


Fig. 6. Effect of salinity of the growth medium on xylanase production by isolate # 3 when measured at pH 3.5 at 50°C (○) and 80°C (●). Bars show standard deviation.

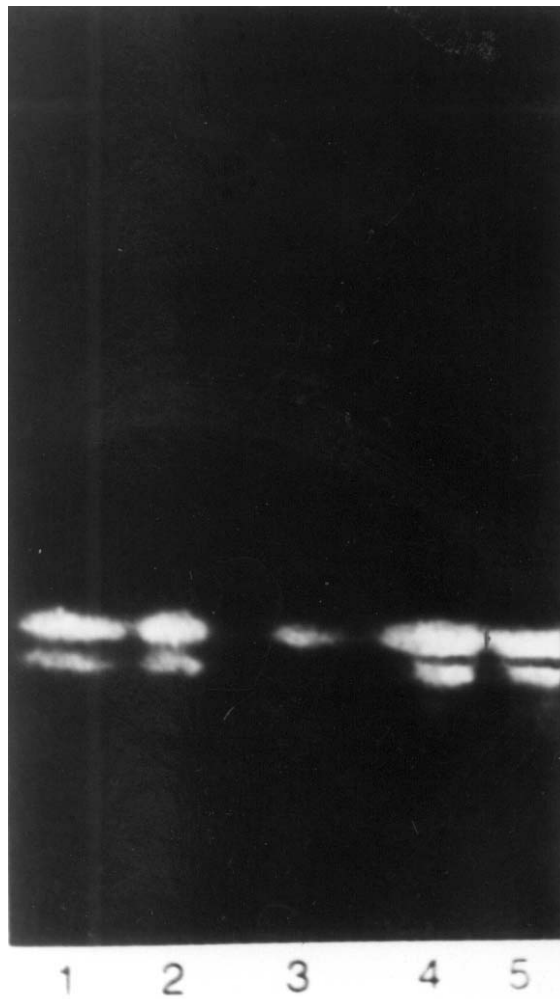


Fig. 7. *In situ* detection of xylanase derived from culture filtrate of isolate #3 after non-denaturing electrophoresis on polyacrylamide gel containing oat spelt xylan. Lanes 1 & 2: crude extract containing 78 and 156 μg protein respectively. Lane 3: 0-35% ammonium sulfate fraction, 15 μg protein. Lanes 4 & 5: 50-80% ammonium sulfate fractions containing 20 and 40 μg protein respectively. The two xylanase activity bands (Xyl I and Xyl II) are prominent.

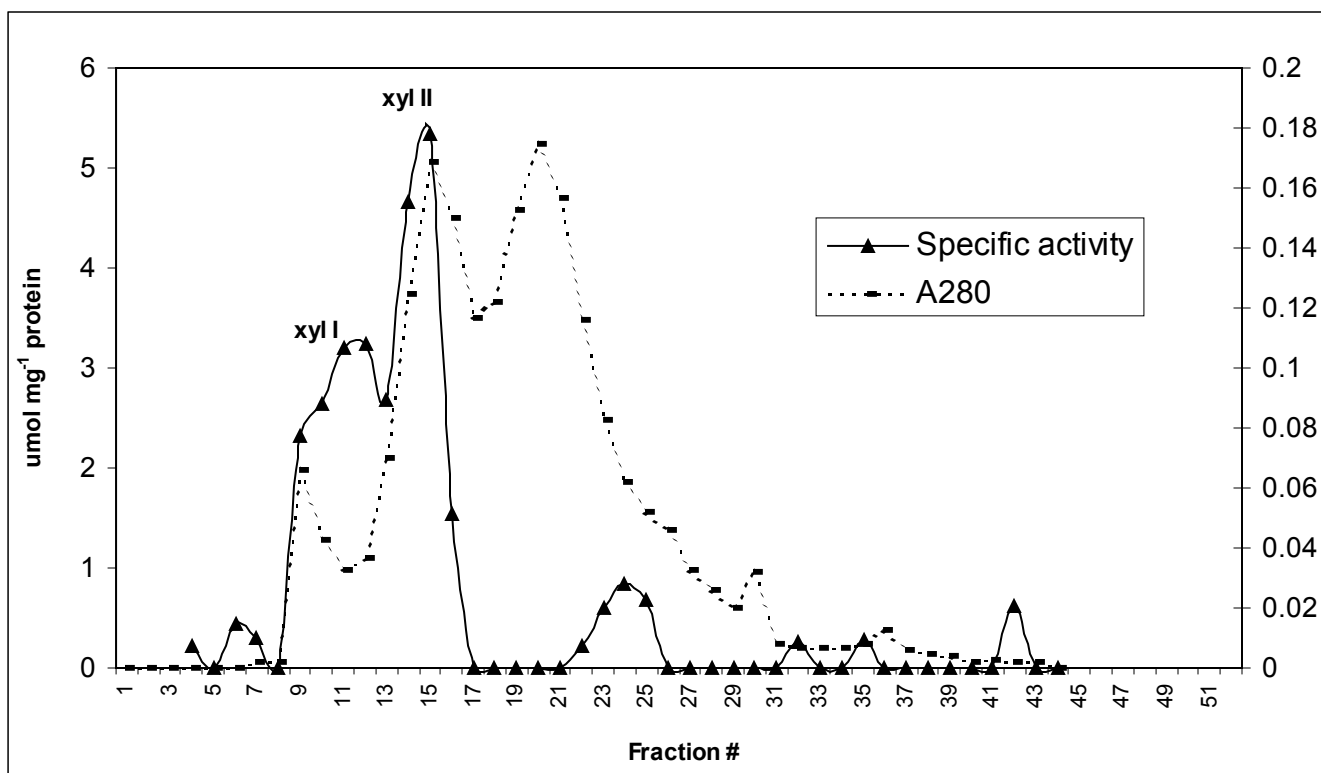


Fig. 8. Gel filtration profile of the 50-80% ammonium sulfate fraction derived from culture filtrate of isolate #3 on Sephadex-G100 column. Assays for xylanase activity (▲) and protein by A₂₈₀ measurement (----) were carried out for the 3 ml fractions collected.

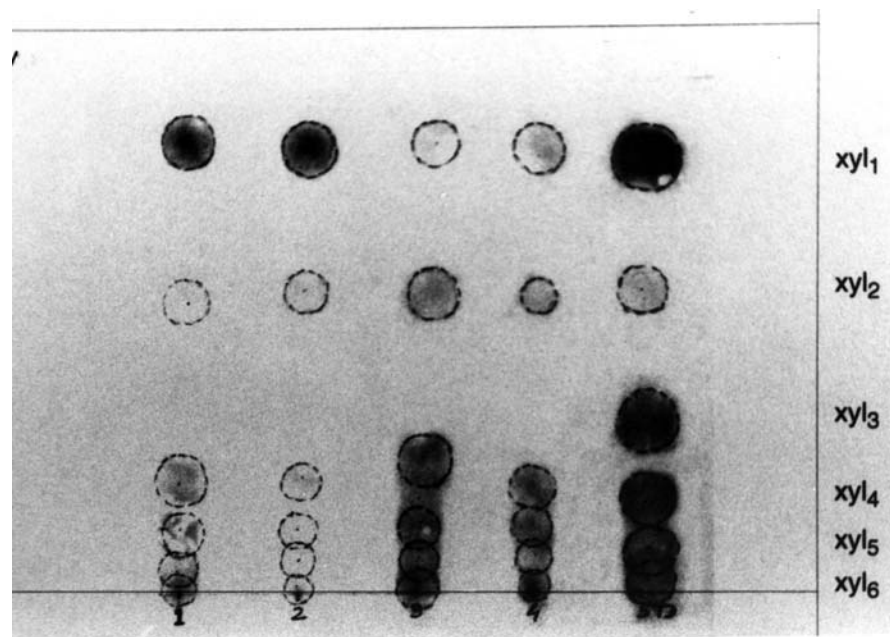


Fig. 9. Paper chromatography of the hydrolysis products of oat spelt xylan after incubation for 30 min with the 50-80% ammonium sulfate fraction derived from culture filtrate of isolate #3. Lane 1; culture grown at pH 4.5 and assayed at pH 4.5/50°C; Lane 2 culture grown at pH 4.5 and assayed at pH 4.5/80°C; Lane 3 culture grown at pH 8.5 and assayed at pH 8.5/ 50°C; Lane 4 culture grown at pH 8.5 and assayed at pH 8.5/80°C. Lane 5 Standard, containing a mixture of xylose (X₁), xylobiose (X₂), xylotriose (X₃), xylotetrose (X₄), xylopentose (X₅) and xylohexose (X₆).