

 Open access • Journal Article • DOI:10.1007/S00259-011-1792-2

⁹⁰Y Time-of-flight PET/MR on a hybrid scanner following liver radioembolisation (SIRT). — Source link

Michael Wissmeyer, Susanne Heinzer, Pietro Majno, Franz Buchegger ...+6 more authors

Institutions: Philips

Published on: 06 Apr 2011 - European Journal of Nuclear Medicine and Molecular Imaging (Eur J Nucl Med Mol Imaging)

Topics: Positron emission tomography

Related papers:

- [Internal Pair Production of ⁹⁰Y Permits Hepatic Localization of Microspheres Using Routine PET: Proof of Concept](#)
- [Feasibility of ⁹⁰Y TOF PET-based dosimetry in liver metastasis therapy using SIR-Spheres.](#)
- [Design and performance evaluation of a whole-body Ingenuity TF PET-MRI system](#)
- [Yttrium-90 TOF PET scan demonstrates high-resolution biodistribution after liver SIRT](#)
- [Performance Measurements of the Siemens mMR Integrated Whole-Body PET/MR Scanner](#)

Share this paper:    

View more about this paper here: <https://typeset.io/papers/y-time-of-flight-pet-mr-on-a-hybrid-scanner-following-liver-1np1zcy0pn>

Time-of-flight PET/MR on a hybrid scanner following liver radioembolisation (SIRT)

WISSMEYER, Michael, *et al.*

Reference

WISSMEYER, Michael, *et al.* Time-of-flight PET/MR on a hybrid scanner following liver radioembolisation (SIRT). *European Journal of Nuclear Medicine and Molecular Imaging*, 2011, vol. 38, no. 9, p. 1744-5

DOI : 10.1007/s00259-011-1792-2

PMID : 21468764

Available at:

<http://archive-ouverte.unige.ch/unige:23497>

Disclaimer: layout of this document may differ from the published version.



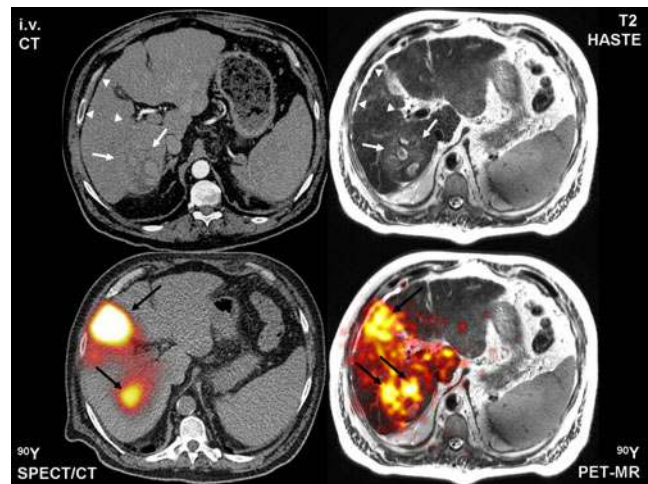
**UNIVERSITÉ
DE GENÈVE**

⁹⁰Y Time-of-flight PET/MR on a hybrid scanner following liver radioembolisation (SIRT)

Michael Wissmeyer · Susanne Heinzer · Pietro Majno · Franz Buchegger ·
Habib Zaidi · Valentina Garibotto · Magalie Viallon · Christoph D. Becker ·
Osman Ratib · Sylvain Terraz

Received: 21 February 2011 / Accepted: 7 March 2011 / Published online: 6 April 2011
© Springer-Verlag 2011

Several studies have reported on the use of high-resolution ⁹⁰Y PET/CT scans in the evaluation of the biodistribution of ⁹⁰Y-labelled glass or resin based microspheres after radioembolisation of malignant liver lesions [1–4]. PET/MR is an emerging technology providing particularly high soft tissue contrast and no inherent radiation exposure. A 67-year-old man with multifocal unresectable hepatocellular carcinoma was referred for selective internal radiation therapy (SIRT). The pretreatment management consisted of angio-CT of the liver, embolisation of the right gastric and gastroduodenal arteries followed by ^{99m}Tc-MAA SPECT/CT. Two weeks later, 4.3 GBq of ⁹⁰Y-labelled TheraSpheres® (MDS Nordion, Kanata, Canada) were administered in a single bolus into the right liver lobe. Subsequently, the patient



M. Wissmeyer (✉) · F. Buchegger · H. Zaidi · V. Garibotto ·
O. Ratib
Department of Nuclear Medicine,
Hôpitaux Universitaires de Genève,
Rue Gabrielle-Perret-Gentil 4,
1211 Geneva, Switzerland
e-mail: michael.wissmeyer@hcuge.ch

S. Heinzer
Philips AG,
Allmendstrasse 140,
8027 Zurich, Switzerland

P. Majno
Department of Visceral and Transplantation Surgery,
Hôpitaux Universitaires de Genève,
Rue Gabrielle-Perret-Gentil 4,
1211 Geneva, Switzerland

M. Viallon · C. D. Becker · S. Terraz
Department of Radiology, Hôpitaux Universitaires de Genève,
Rue Gabrielle-Perret-Gentil 4,
1211 Geneva, Switzerland

underwent integrated ⁹⁰Y bremsstrahlung SPECT/CT on a Symbia T6 hybrid scanner (Siemens, Erlangen, Germany) equipped with a medium-energy collimator. The energy peak was set at 90 keV with a 30% window. SPECT data were reconstructed using the FLASH 3-D algorithm (4 iterations, 8 subsets). PET/MR was obtained on a Philips Gemini TF PET/MR. PET scanning (one bed position centred on the liver) lasted for 30 min; the MR protocol consisted of a 3-D T1 FFE sequence (TE=2.3 ms, TR=4.1 ms, voxel size=3×3×6 mm) for anatomical correlation and attenuation correction, and axial as well as coronal T2 HASTE sequences (TE=136 ms, TR=2,351 ms, voxel size=1.2×1×5mm). The PET data were reconstructed using a 3-D line-of-response time-of-flight (TOF) blob-based algorithm (3 iterations, 33 subsets) with a voxel size of 4×4×4 mm³. MR allowed better lesion visualisation than contrast-enhanced CT (white arrows and arrowheads); PET/MR provided sharper lesion to background contrast and discrimination than SPECT/CT (black arrows).

Conflicts of interest None.

References

1. Gates VL, Esmail AA, Marshall K, Spies S, Salem R. Internal pair production of ^{90}Y permits hepatic localization of microspheres using routine PET: proof of concept. *J Nucl Med* 2010;52:72–6.
2. Lhommel R, Goffette P, Van den Eynde M, Jamar F, Pauwels S, Bilbao JI, et al. Yttrium-90 TOF PET scan demonstrates high-resolution biodistribution after liver SIRT. *Eur J Nucl Med Mol Imaging* 2009;36:1696.
3. Lhommel R, van Elmbt L, Goffette P, Van den Eynde M, Jamar F, Pauwels S, et al. Feasibility of ^{90}Y TOF PET-based dosimetry in liver metastasis therapy using SIR-Spheres. *Eur J Nucl Med Mol Imaging* 2010;37:1654–62.
4. Werner MK, Brechtel K, Beyer T, Dittmann H, Pfannenbergl C, Kupferschläger J. PET/CT for the assessment and quantification of (^{90}Y) biodistribution after selective internal radiotherapy (SIRT) of liver metastases. *Eur J Nucl Med Mol Imaging* 2010;37:407–8.