

UC Berkeley

UC Berkeley Previously Published Works

Title

Yeast phosphatidylinositol 4-kinase, Pik1, has essential roles at the Golgi and in the nucleus

Permalink

<https://escholarship.org/uc/item/5vs8d723>

Journal

Journal of Cell Biology, 171(6)

ISSN

0021-9525

Authors

Strahl, Thomas
Hama, Hiroko
DeWald, Daryll B
[et al.](#)

Publication Date

2005-12-01

Supplemental Material

<https://escholarship.org/uc/item/5vs8d723#supplemental>

Peer reviewed

Yeast phosphatidylinositol 4-kinase, Pik1, has essential roles at the Golgi and in the nucleus

Thomas Strahl,¹ Hiroko Hama,² Daryll B. DeWald,² and Jeremy Thorner¹

¹Department of Molecular and Cell Biology, University of California, Berkeley, Berkeley, CA 94720

²Department of Biology, Utah State University, Logan, UT 84322

Phosphatidylinositol 4-kinase, Pik1, is essential for viability. GFP-Pik1 localized to cytoplasmic puncta and the nucleus. The puncta colocalized with Sec7-DsRed, a marker of trans-Golgi cisternae. Kap95 (importin- β) was necessary for nuclear entry, but not Kap60 (importin- α), and exportin Msn5 was required for nuclear exit. Frq1 (frequenin orthologue) also is essential for viability and binds near the NH₂ terminus of Pik1. Frq1-GFP localized to Golgi puncta, and Pik1 lacking its Frq1-binding site (or Pik1 overexpressed in *frq1* Δ cells) did not decorate the Golgi, but nuclear localization was unper-

turbed. Pik1(Δ 10-192), which lacks its nuclear export sequence, displayed prominent nuclear accumulation and did not rescue inviability of *pik1* Δ cells. A Pik1-CCAAX chimera was excluded from the nucleus and also did not rescue inviability of *pik1* Δ cells. However, coexpression of Pik1(Δ 10-192) and Pik1-CCAAX in *pik1* Δ cells restored viability. Catalytically inactive derivatives of these compartment-restricted Pik1 constructs indicated that PtdIns4P must be generated both in the nucleus and at the Golgi for normal cell function.

Introduction

Phosphatidylinositol (PtdIns) and derived molecules have crucial functions in eukaryotes, including yeast (Michell et al., 2003). PtdIns can be phosphorylated on certain hydroxyls in its head group by specific lipid kinases; phosphoinositides (PIPs) so generated can be hydrolyzed by various lipid phosphatases. PIPs, especially PtdIns4,5P₂, can be cleaved by PLC, producing DAG and water-soluble inositol-1,4,5-P₃ (IP₃). IP₃ can be acted on by other kinases and phosphatases to generate other inositol-phosphate species (IP_xs). Thus, different membrane PIPs and soluble IP_xs are well suited to serve as spatial and temporal regulators of diverse cellular processes.

The *Saccharomyces cerevisiae* genome encodes three PtdIns 4-kinase (PI4K) isoforms that generate PtdIns4P: Pik1 (Flanagan et al., 1993), Stt4 (Yoshida et al., 1994), and Lsb6 (Han et al., 2002; Shelton et al., 2003). All are conserved from yeast to humans (for review see Heilmeyer et al., 2003). The mammalian Pik1 orthologue is PI4KIII β (Kapp-Barnea et al., 2003). Pik1 (120 kD) is soluble in cell extracts (Flanagan and

Thorner, 1992) and Stt4 (215 kD) is localized in the plasma membrane (PM; Audhya and Emr, 2002). Each is essential for cell viability (Flanagan et al., 1993; Yoshida et al., 1994), indicating they serve nonoverlapping roles. Lsb6 (70 kD) is membrane associated, but dispensable, and is purported to function in endosome motility (Chang et al., 2005).

The first *sst4* mutants were identified because they were hypersensitive to staurosporine, which is an inhibitor somewhat specific for PKC-related protein kinases (Yoshida et al., 1994). This phenotype is now understood. Pkc1 is essential for cell viability (Levin et al., 1990) and activated by the small GTPase, Rho1 (Kamada et al., 1996). Rho1 activation depends on the recruitment of its cognate guanine nucleotide exchange factor (GEF) Rom2, which contains a PtdIns4,5P₂-specific pleckstrin homology (PH) domain (Audhya and Emr, 2002). Stt4 generates the pool of PtdIns4P at the PM that is converted to PtdIns4,5P₂ by the PtdIns4P 5-kinase, Mss4 (Desrivieres et al., 1998; Audhya and Emr, 2003). Thus, PtdIns4P serves as an intermediate in the generation of PtdIns4,5P₂ and, in many eukaryotes (but not *S. cerevisiae*), PtdIns3,4,5P₃, which each have been ascribed roles in actin dynamics, receptor-tyrosine kinase signaling, and endocytosis (Martin, 1998). However, compelling cumulative evidence, obtained first in yeast, shows that PtdIns4P itself has an important function in the Golgi (Hama et al., 1999; Walch-Solimena and Novick, 1999; Levine and Munro, 2002; Wang et al., 2003).

Correspondence to Jeremy Thorner: jthorner@berkeley.edu

H. Hama's present address is Dept. of Biochemistry and Molecular Biology, Medical University of South Carolina, Charleston, SC 29425.

Abbreviations used in this paper: DsRed, *Discosoma spp.* red fluorescent protein; GEF, guanine nucleotide exchange factor; IP₃, inositol-1,4,5-P₃; IP_xs, other inositol-phosphates; PH, pleckstrin homology; PI4K, PtdIns 4-kinase; PIP, phosphoinositide; PM, plasma membrane; PtdIns, phosphatidylinositol.

The online version of this article contains supplemental material.

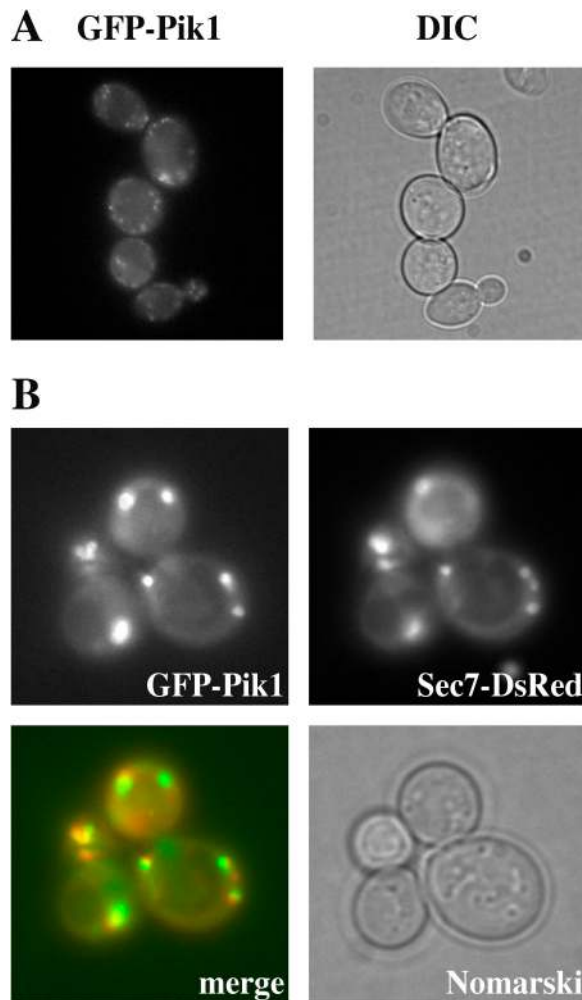


Figure 1. **Pik1 localizes to cytoplasmic puncta enriched in a diagnostic Golgi marker.** (A) Strain BY4743 carrying pTS8 was grown to mid-exponential phase at 30°C and examined by fluorescence microscopy (left) or Nomarski (DIC) optics (right). (B) Strain YTS114 expressing Sec7-DsRed (from the *TRP1* locus) and GFP-Pik1 from pTS8 were grown to mid-exponential phase, immobilized in soft agar, and examined by fluorescence microscopy using band-pass filters optimized for the detection of GFP (top left) or DsRed (top right), and by Nomarski optics (bottom right). Overlay of the GFP and DsRed images is also shown (merge).

Genetic evidence implicates Pik1 in the synthesis of the Golgi pool of PtdIns4P. However, there is conflicting data concerning subcellular localization of Pik1. In cell lysates, the enzyme fractionates mainly like a soluble protein (Flanagan and Thorner, 1992; Huttner et al., 2003). Nevertheless, when examined by indirect immunofluorescence, epitope-tagged Pik1 localized to prominent cytosolic bodies, only some of which seemed congruent with a marker (Chs5) of the late Golgi (Schnieders, 1996; Walch-Solimena and Novick, 1999). In some cells, the nucleus was prominently stained (but it could not be discerned whether staining was inside or decorating the nuclear envelope). Yet another study that used an antibody of uncertain provenance and questionable utility for specific detection of Pik1, localized the protein exclusively to the nucleus upon subcellular fractionation (Garcia-Bustos et al., 1994). In contrast, a recent global analysis of yeast proteins using COOH-terminal GFP fusions

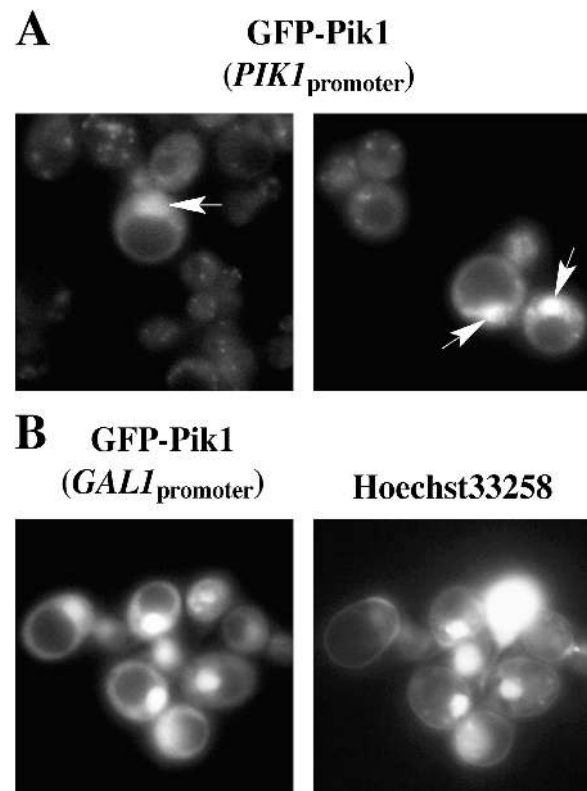


Figure 2. **Pik1 is also a resident in the nucleus.** (A) Two independent fields of the same culture that was described in Fig. 1 A. Some cells (typically those with the highest total fluorescence) exhibit a strong nuclear signal (arrows). (B) Strain BY4743 carrying pTS9 were induced with galactose for 3 h, counterstained for DNA with Hoechst 33258, and viewed under the fluorescence microscope with appropriate filters to visualize GFP (left) and the DNA dye (right).

concluded that Pik1 is localized uniformly in the cytosol (Huh et al., 2003). To further complicate matters, Pik1 binds and is positively regulated by the small, N-myristoylated, Ca^{2+} -binding protein, Frq1 (frequenin/neuronal calcium sensor-1; Hendricks et al., 1999; Ames et al., 2000); however, the role of Frq1 in subcellular localization of Pik1 has not been explored.

Given the evidence that PIP-derived products have roles in the nucleus in both yeast (Odom et al., 2000) and animal cells (Irvine, 2003), the potential duality in Pik1 localization was intriguing, suggesting that, the essential functions of this enzyme may involve generation of PtdIns4P pools both at the Golgi and in the nucleus. To this end, and to better understand the mechanisms that control its subcellular localization, we first examined the intracellular distribution and dynamics of Pik1 in vivo using a fully functional GFP-Pik1 fusion, which revealed that Pik1 undergoes nucleocytoplasmic shuttling. We then used genetic approaches to discern the requirements for nuclear import and export of Pik1. Moreover, using appropriate mutants, we also analyzed the contributions that Frq1 makes to intracellular localization of Pik1. Finally, using strategies to restrict Pik1 to either the cytosolic or nuclear compartments, we investigated whether Pik1 serves essential physiological functions at the Golgi and in the nucleus and whether its PI4K activity is required in either organelle.

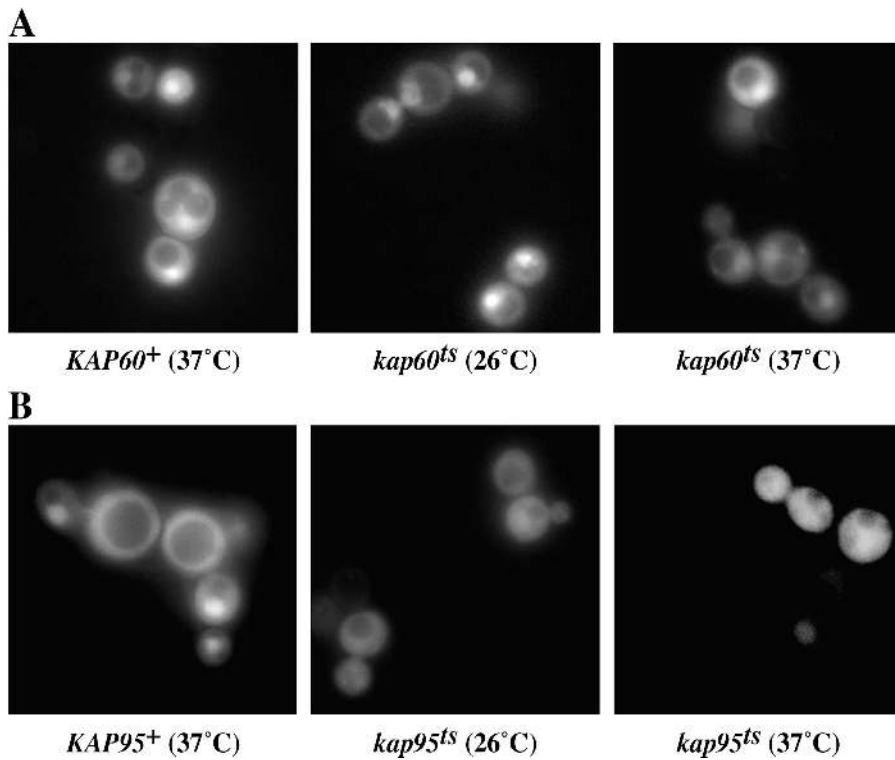


Figure 3. Nuclear import of Pik1 requires importin- β , but not importin- α . (A) An importin- α (*kap60^{ts}*) mutant (YTS0012 *srp1-31^{ts}*) and its otherwise isogenic KAP60⁺ parent (W303-1a) carrying pTS7 were grown in SCRaif-Trp at 26°C to $A_{600\text{ nm}} \approx 0.7$, and a portion of each culture was shifted to 37°C. After 1 h, expression of GFP-Pik1 was induced by addition of galactose, and the cells were incubated for an additional 2 h at the indicated temperature before being inspected by fluorescence microscopy. (B) The identical experiment described in A was performed with an importin- β (*kap95^{ts}*) mutant (SWY1313 *rs11^{ts}*) and its otherwise isogenic parent strain (SWY1312) carrying pTS7, except that, after galactose induction, the cells were incubated for 3 h at the indicated temperature before inspection.

Results

Pik1 localizes to both the Golgi and the nucleus

Prior work (Hama et al., 1999; Walch-Solimena and Novick, 1999; Audhya et al., 2000) indicated that Pik1 function is needed for the Golgi-to-PM stage of secretion. At a restrictive temperature, *pik1^{ts}* mutants (but not isogenic *PIK1⁺* cells) accumulate aberrant membranous structures (Fig. S1 A, available at <http://www.jcb.org/cgi/content/full/jcb.200504104/DC1>) that are similar in the EM to those accumulated by *sec* mutants blocked in Golgi-to-PM transport (Esmon et al., 1981; Fig. S1 B). The hypertrophied sacs that accumulate represent Golgi cisternae because they contain bona fide Golgi marker proteins, but not marker proteins of other compartments (Fig. S1 C). However, where Pik1 itself resides had not been resolved.

To examine subcellular localization in real time in live cells, GFP fusions were constructed. An NH₂-terminal fusion (GFP-Pik1) was functional, as judged, first, by its stable expression that was determined by immunoblotting (unpublished data) and, second, by its ability to fully restore viability to *pik1 Δ* cells (unpublished data). A COOH-terminal fusion (Pik1-GFP) was stable, but not functional. When expressed from the native *PIK1* promoter on a low-copy (*CEN*) plasmid in a wild-type strain, GFP-Pik1 decorated numerous cytoplasmic puncta in the majority of cells (Fig. 1 A). To demonstrate that this compartment represents the Golgi, we exploited the properties of a chimera between a diagnostic marker for the late Golgi cisternae, Sec7 (Franzusoff et al., 1991), and *Discosoma spp.* red fluorescent protein (DsRed). Because DsRed tetramerizes, normally dispersed Golgi cisternae that contain Sec7-DsRed tend to clump into larger aggregates (Reinke et al., 2004).

When GFP-Pik1 and Sec7-DsRed were coexpressed, GFP-Pik1 also clumped into a few large aggregates (Fig. 1 B, top left), just like Sec7-DsRed (Fig. 1 B, top right); and, both proteins colocalized in the majority of these clusters (Fig. 1 B, top left). Hence, the cytosolic puncta decorated by GFP-Pik1 are the Golgi itself.

However, we noted consistently that, even when expressed at a near-endogenous level, GFP-Pik1 was found in the nucleus in 2–13% of the cells (depending on the strain examined; Fig. 2 A). No correlation between bud morphology and Pik1 distribution was seen, suggesting localization is not regulated by the cell cycle. When expression of GFP-Pik1 was elevated (Fig. 2 B), all cells displayed a very bright fluorescence that was congruent with the nucleus (stained with a vital DNA dye) and the cytosolic puncta were obscured by the general increase in cellular fluorescence.

Pik1 undergoes nucleocytoplasmic shuttling

The preceding results suggested that GFP-Pik1 is imported into the nucleus and, when overexpressed, accumulates there because its rate of entry exceeds its rate of export. Given its size, this nuclear import of GFP-Pik1 should require one (or more) of the known karyopherins (Strom and Weis, 2001). Therefore, we expressed GFP-Pik1 in strains carrying null mutations or temperature-sensitive alleles in all of the known importins. Nuclear accumulation of GFP-Pik1 was not impeded in mutants lacking any of the nonessential importins: Kap104, Sxm1, Mtr10, Kap114, Nmd5, Lph2, Pse1, Pdr6, and Yrb4 (unpublished data).

Kap60/Srp1/importin- α and Kap95/Rsl1/importin- β are each essential for viability. Typically, cargo proteins that use these karyopherins to enter the nucleus bind (via their NLS) to

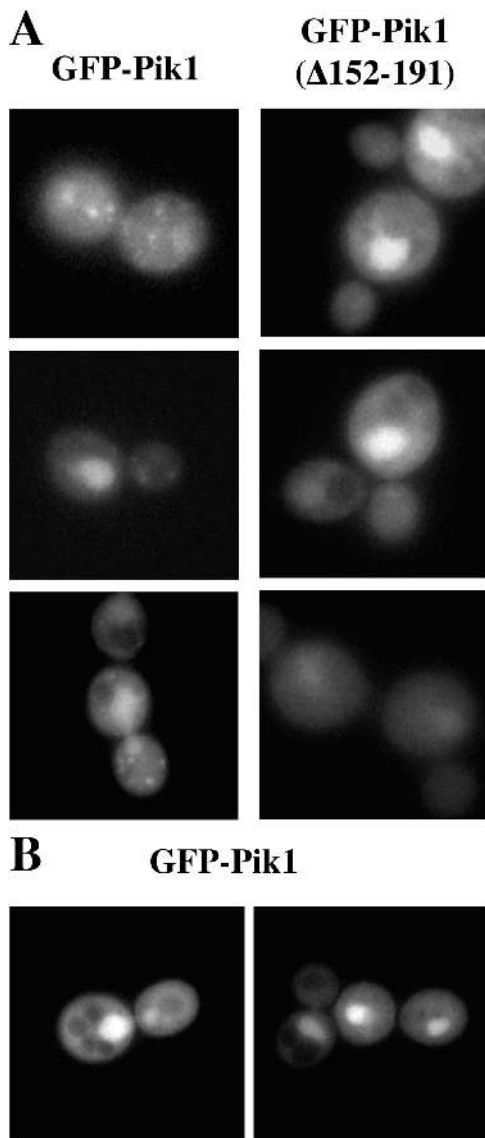


Figure 4. Tethering of Pik1 at the Golgi requires Frq1. (A) Transformants of strain BY4743 carrying pTS9 and pTS10 to express either GFP-Pik1 (left) or GFP-Pik1(Δ 152-191) (right), respectively, were induced with galactose for a brief period followed by shift to glucose to repress further expression, before viewing by fluorescence microscopy. (B) A *frq1* Δ null mutant (YKBH9) is shown harboring both YEp352GAL-PIK1 and pTS7, grown on galactose medium and viewed by fluorescence microscopy.

Kap60, which, in turn, binds to Kap95 (Enekel et al., 1995). If Pik1 has an essential role in the nucleus, then these karyopherins may mediate its entry. In a *kap60^{ts}* mutant (Loeb et al., 1995), GFP-Pik1 still localized to the nucleus, even after a prolonged incubation at a restrictive temperature, which was no different from *KAP60⁺* cells at the same high temperature (Fig. 3 A). In contrast, nuclear accumulation of GFP-Pik1 was largely abrogated in a *kap95^{ts}* mutant (Iovine and Went, 1997), even at permissive temperature, whereas robust nuclear accumulation of GFP-Pik1 was seen in otherwise isogenic *KAP95⁺* cells even at restrictive temperature (Fig. 3 B). Thus, although not unprecedented (Nikolaev et al., 2003), Pik1 is among the rare cargo whose nuclear import is mediated by Kap95 directly. Consistent

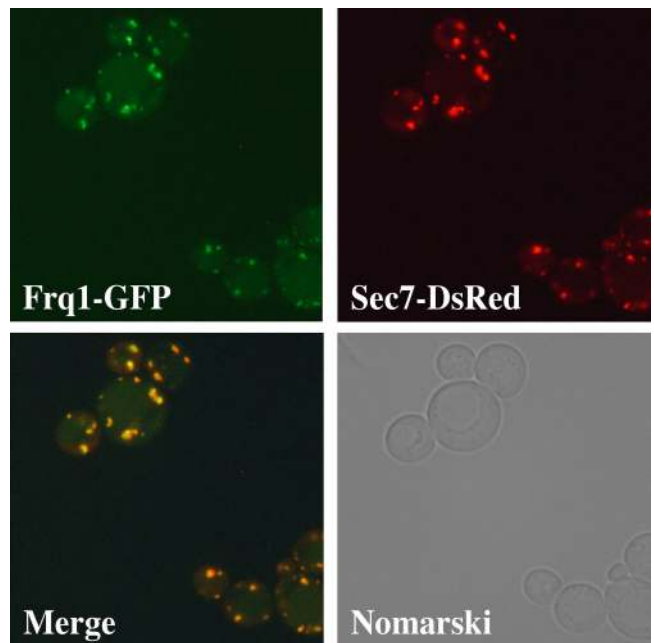


Figure 5. Frq1-GFP localizes to Golgi puncta in the cytosol. Diploid strain YTS153, expressing *FRQ1-GFP* from its native promoter and integrated at its endogenous locus and *SEC7-DsRed* from the *TPI1* promoter and integrated at the *TRP1* locus, was grown and viewed by fluorescence microscopy, as in Fig. 1.

with this conclusion, mutagenesis of the only close match in Pik1 to the classical NLS recognized by Kap60 (²⁸⁴KLPKRKPK²⁹¹ to ²⁸⁴KLPKLLK²⁹¹) did not prevent its nuclear import or otherwise alter its intracellular distribution (unpublished data).

For confirmation, the ability of Pik1 to associate directly with Kap95 was examined *in vitro*. Empty nickel agarose beads or beads coated with purified Kap95-His₆ were incubated with the soluble fraction of extracts from yeast cells carrying an empty vector or expressing NH₂ terminally c-Myc epitope-tagged Pik1 or a truncation, Pik1(Δ 793-1066), lacking its catalytic domain. Bound proteins were analyzed by SDS-PAGE and immunoblotting. No species cross-reactive with the anti-c-Myc (α Myc) mAb was detected in extracts from cells carrying vector alone (Fig. S2, top, lanes 2 and 5; bottom, lane 2). In contrast, \sim 80% of the input mycPik1 bound to the Kap95-His₆-coated beads, whereas $<$ 5% of the input mycPik1 bound to empty beads (Fig. S2, top panel, compare lane 1 with lane 4). Although expressed at a lower level (Fig. S2, bottom, compare lane 3 with lane 1), \sim 80% of the input mycPik1(Δ 793-1066) bound to the Kap95-His₆ beads, whereas no detectable binding to empty beads was observed (Fig. S2, top, compare lane 3 with lane 6). Thus, Pik1 binds to Kap95 via an interaction site within its NH₂-terminal regulatory domain.

Role of Frq1 in subcellular localization of Pik1

The NH₂-terminal regulatory domain of Pik1 also contains a high-affinity binding site for Frq1, and Frq1 is required for optimal activity of Pik1 and for normal Pik1 function *in vivo* (Hendricks et al., 1999; Ames et al., 2000; Huttner et al., 2003).

Based on its fractionation properties and its tight binding to Pik1, Frq1 might promote membrane interaction of Pik1, which lacks any known membrane-targeting motifs or domains. To determine whether Frq1 plays any role in subcellular localization of Pik1, we first examined a small deletion mutant, Pik1(Δ 152-191), that retains considerable catalytic function (~80% of wild-type Pik1), but lacks nearly all Frq1-binding activity (Huttner et al., 2003). Compared with GFP-Pik1, which displayed the expected distribution between the Golgi puncta and the nucleus (Fig. 4 A, left), GFP-Pik1(Δ 152-191) showed a somewhat enhanced nuclear accumulation, diffuse cytoplasmic distribution, and never any detectable cytoplasmic puncta, even in cells expressing it at a low level (Fig. 4 A, right). As independent confirmation, we took advantage of the fact that inviability of *frq1 Δ cells can be rescued when Pik1 is highly overexpressed. Although overexpression tends to obscure visualization of the Golgi puncta, such bodies are still seen in a fraction of *FRQ1*⁺ cells where GFP-Pik1 is produced from the *GAL1* promoter (not depicted), but never observed in *frq1 Δ cells (Fig. 4 B).**

If Frq1 is required for Golgi recruitment of Pik1, then Frq1 itself should localize to the Golgi. Hence, Frq1 was tagged at its COOH terminus with GFP (because its NH₂-terminal myristoyl group is important for its function) and was fully functional (unpublished data). Frq1-GFP displayed prominent cytoplasmic puncta, congruent with Sec7-DsRed (Fig. 5). As in *pik1*^{ts} mutants at restrictive temperature, secretion of invertase (Suc2) is largely blocked in *frq1*^{ts} mutants (even at permissive temperatures; Fig. S3 A, available at <http://www.jcb.org/cgi/content/full/jcb.200504104/DC1>) and aberrant Golgi-like structures are seen in *frq1*^{ts} cells at the restrictive temperature (Fig. S3 B). Thus, Frq1 plays a critical role in secretion because it is necessary for recruitment of Pik1 to the Golgi, but not for its nuclear import or export.

Nuclear export of Pik1 is dependent on Msn5

A hallmark of proteins that undergo continuous nucleocytoplasmic shuttling (as opposed to those bound and sequestered in the nucleus) is that they accumulate dramatically in the nucleus if the karyopherin responsible for their active export is removed. To demonstrate that Pik1 cycles between the nucleus and the cytosol and to identify the exportin responsible, we expressed GFP-Pik1 in strains that carry temperature-sensitive or null mutations in the four known exportins (Strom and Weis, 2001). No change in distribution of GFP-Pik1 was observed in *cse1*^{ts} or *xpo1*^{ts} mutants at the restrictive temperature, or in a *los1 Δ mutant under normal growth conditions (Fig. 6), or in the corresponding parental strains (not depicted). In contrast, a majority (\geq 70%) of *msn5 Δ cells displayed prominent nuclear accumulation of GFP-Pik1 (Fig. 6), but the isogenic *MSN5*⁺ parental strain did not (see Fig. 7). Thus, Pik1 continually shuttles between the nucleus and cytoplasm, and Msn5 mediates its nuclear export.**

Retention of Pik1 in the cytosol

To test whether nuclear entry is essential for its function, we devised means to restrain Pik1 in the cytosol. There is no

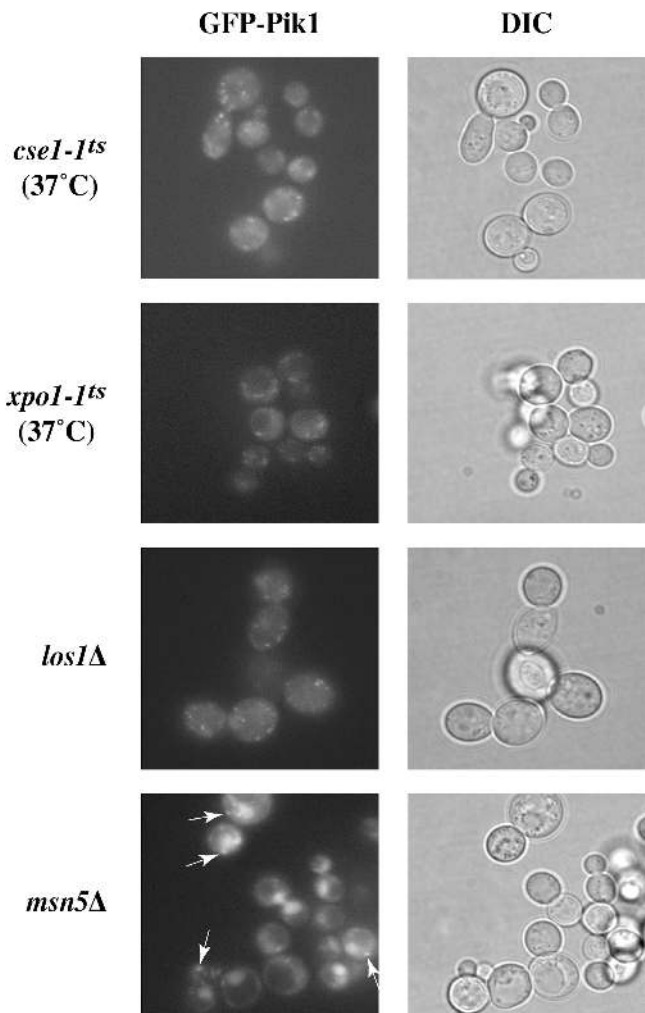


Figure 6. **Pik1 is exported from the nucleus in an Msn5-dependent manner.** Strains carrying conditional or null mutations in the exportin genes indicated (see Table II), and their otherwise isogenic parental strains, were transformed with either pTS6 or pTS8, as necessary, and inspected by fluorescence microscopy. Pronounced nuclear accumulation occurred only in the *msn5 Δ mutant, but cytosolic puncta were also present (arrows).*

known consensus sequence for Kap60-independent, Kap95-dependent import. Hence, we exploited the COOH-terminal CCAAX motif of *S. cerevisiae* Ras2, which is S-prenylated, S-palmitoylated and carboxymethylated (Hancock, 2003) and serves as a constitutive membrane anchor (Pryciak and Huntress, 1998) that traffics proteins from the ER to the Golgi and then to the PM (Hancock, 2003). The five COOH-terminal residues of Pik1 (QGYIS-COOH) were replaced with the five COOH-terminal residues of Ras2 (CCIIS-COOH), designated Pik1-CCAAX. When expressed briefly from the *GAL1* promoter on a *CEN* plasmid in normal cells, both GFP-Pik1 and GFP-Pik1-CCAAX decorated the Golgi puncta (although the latter was expressed at a somewhat lower level; Fig. 7 A), but GFP-Pik1-CCAAX was never observed in the nucleus, even upon prolonged expression from the *GAL1* promoter (not depicted). When expressed in the same way in *msn5 Δ cells, GFP-Pik1 accumulated detectably in the nucleus, whereas GFP-Pik1-CCAAX did not (Fig. 7 B), confirming that GFP-*

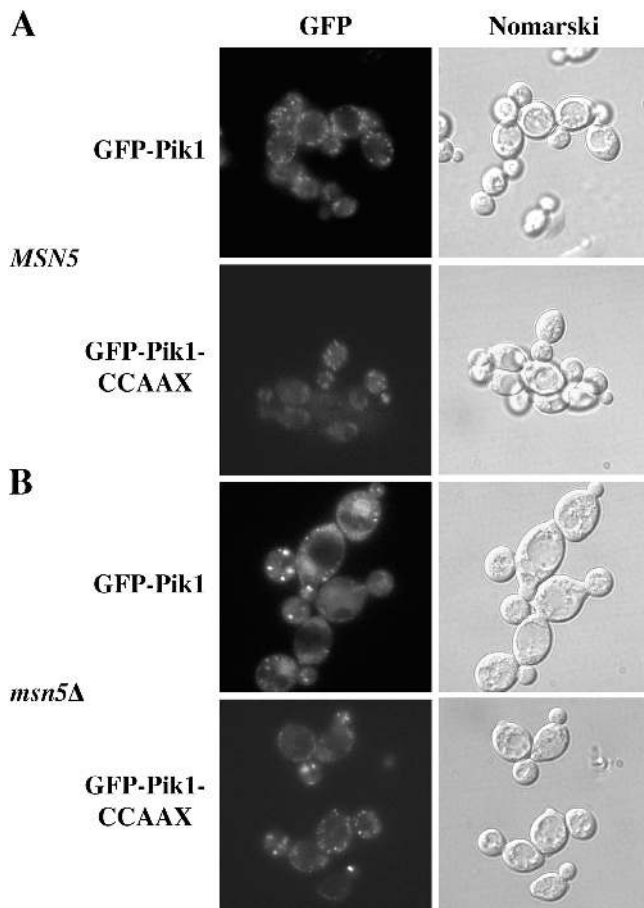


Figure 7. **GFP-Pik1-CCAAX is restrained in the cytosol.** A wild-type (*MSN5⁺/MSN5⁺*) diploid (BY4743) (A) and a homozygous *msn5Δ/msn5Δ* derivative (YTS002) (B) were transformed with pTS9 (GFP-Pik1) or pTS11 (GFP-Pik1-CCAAX), as indicated, grown to mid-exponential phase, induced with galactose for 45 min, returned to glucose medium to repress further expression, and were viewed in the fluorescence microscope (left) or under Nomarski optics (right) after 1 h.

Pik1-CCAAX does not enter the nucleus. Thus, attachment of the Ras2 CCAAX motif to the Pik1 COOH terminus did not interfere with Golgi localization, but prevented nuclear import.

Retention of Pik1 in the nucleus

A 28-residue site (147–172) in Pik1 is necessary and sufficient for Frq1 binding (Huttner et al., 2003; Strahl et al., 2003), as judged by deletion mutants that remove these residues. To determine how such mutations affect subcellular localization, we examined Pik1 derivatives tagged with an NH₂-terminal c-Myc epitope by indirect immunofluorescence. Generally, localization in fixed cells observed using the epitope-tagged constructs gave the same result as for GFP-Pik1 fusions in live cells, for example, GFP-Pik1-CCAAX (Fig. 7) and mycPik1-CCAAX (Fig. 8). A lack of the Frq1-binding site alone prevented Golgi targeting of GFP-Pik1 (Fig. 4 A) or mycPik1 (not depicted). A larger deletion, mycPik1(Δ10-192), compromised Golgi decoration, but also displayed prominent nuclear accumulation under conditions where mycPik1 did not (Fig. 8). Other deletions of a similar or greater size elsewhere, e.g., Pik1(Δ411-544), did not exhibit nuclear accumulation (unpublished data).

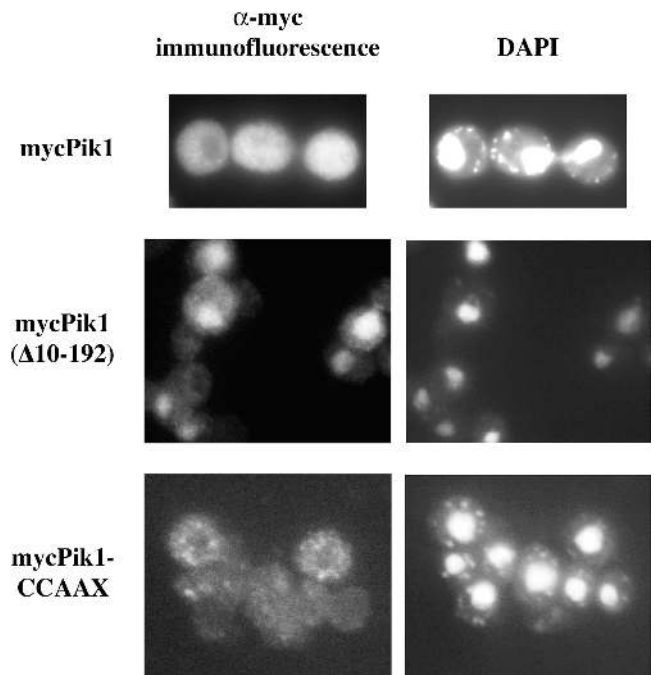


Figure 8. **Pik1(Δ10-192) accumulates in the nucleus.** Diploid strain (BYB67) expressing from pRS314*GAL-mycPIK1*, pTS2 and pTS3, respectively, mycPik1 (top), mycPik1(Δ10-192) (middle) or mycPik1-CCAAX (bottom) were fixed and examined by indirect immunofluorescence using αMyc mAb 9E10 (left), after counterstaining with DAPI to reveal the nucleus (right).

No consensus for cargo recognition by Msn5 is known, yet Pik1(Δ10-192) must lack not only its Frq1-binding site, but also some sequence required for its Msn5-dependent export, confining it in the nucleus.

Pik1 has essential functions inside and outside of the nucleus

Pik1-CCAAX does not enter the nucleus, whereas Pik1(Δ10-192) accumulates in the nucleus. Hence, we examined whether Pik1 restricted to these compartments can provide its essential function, when present as the sole source of this enzyme. Each variant was expressed from the *GAL1* promoter on a *TRP1*-marked *CEN* plasmid in a heterozygous *pik1Δ::KanMX4/PIK1⁺* diploid. The resulting transformants were sporulated, and the tetrads were dissected on Gal medium at 26°C. If a Pik1 variant is functional, it permits growth of the otherwise inviable *pik1Δ* spores. Expression of mycPik1 rescued inviability of the *pik1Δ* spores because most tetrads yielded three or four viable colonies (Fig. 9 C) and many of the spore clones were both kanamycin (G418) resistant and Trp⁺ (not depicted). Neither mycPik1-CCAAX nor mycPik1(Δ10-192) supported growth of the *pik1Δ* spores because only two viable spores were produced from every tetrad (Fig. 9, A and B) and both spores were always G418-sensitive (not depicted).

Failure to rescue *pik1Δ* spore viability could arise if Pik1-CCAAX and Pik1(Δ10-192) were expressed at a much lower level than normal Pik1; yet, immunoblotting indicated that mycPik1, mycPik1(Δ10-192), and mycPik1-CCAAX were produced at similar levels (Fig. S4, bottom; available at [http://](http://www.jcb.org)

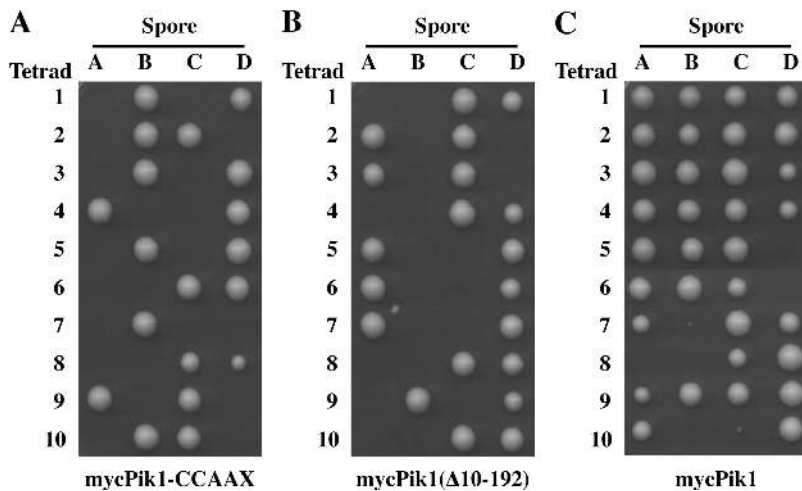


Figure 9. Neither *Pik1*-CCAAX nor *Pik1*(Δ 10-192) can rescue the inviability of *pik1* Δ cells. Heterozygous *pik1* Δ ::*KanMX4/PIK1* diploid strain (YTS68) was transformed with pTS3, pTS2 and pRS314*GAL*-myc*PIK1* expressing, respectively, Myc-tagged *Pik1*-CCAAX (A), myc*Pik1*(Δ 10-192) (B), or myc*Pik1* (C). Each of the transformants was induced to undergo meiosis and sporulation, and the resulting tetrads were dissected and germinated on galactose medium. Spore clones (A–D) from 10 representative tetrads (1–10) of each strain are shown.

www.jcb.org/cgi/content/full/jcb.200504104/DC1). Another explanation could be that the modifications in *Pik1*-CCAAX or *Pik1*(Δ 10-192) severely compromised catalytic activity. To examine this possibility, epitope-tagged proteins were recovered from extracts by immunoprecipitation and used as the enzyme source in *in vitro* PI4K assays. For cells expressing myc*Pik1*, robust PtdIns4P production was found (Fig. S4, top, lane 1). A trace of PtdIns4P was generated when untagged *Pik1* was overexpressed (Fig. S4, top, lane 2), presumably because, when a Myc-tagged protein is absent, some of the abundant untagged *Pik1* binds nonspecifically to the c-Myc mAb-coated beads. This background disappeared when a Myc-tagged protein was present and *Pik1* was at its endogenous level. For example, immunoprecipitation of a known catalytically inactive derivative, myc*Pik1*(Δ 302-785), produced no PtdIns4P (Fig. S4, top, lane 3). By contrast, myc*Pik1*-CCAAX exhibited a specific activity indistinguishable from myc*Pik1* (Fig. S4, top, lane 5), whereas myc*Pik1*(Δ 10-192) displayed a specific activity about \sim 10% of myc*Pik1* (Fig. S4, top, lane 4). Thus, the inability of *Pik1*(Δ 10-192) to complement a *pik1* Δ mutation might be caused by its lower catalytic potency. However, several observations suggest that this is not the case. First, very low expression of normal *Pik1*, for example, from the *GAL1* promoter under repressing conditions (i.e., on glucose medium) is sufficient to support the growth of *pik1* Δ cells (Schnieders, 1996). Second, expression of *Pik1*(Δ 10-192) from the strong *GAL1* promoter on a *CEN* plasmid is still unable to rescue the inviability of *pik1* Δ cells (Fig. 9).

As a further test that the inability of *Pik1*(Δ 10-192) to complement is caused by its restricted compartmentalization and not its lower specific activity, myc*Pik1*(Δ 10-192) and myc*Pik1*-CCAAX were coexpressed from the *GAL1* promoter on differentially marked plasmids in the *pik1* Δ ::*KanMX4/PIK1*⁺ diploid. *GAL1*-expressed myc*Pik1*-CCAAX was introduced into the diploid on the two differentially marked plasmids as a control for the effect of elevated *Pik1* level because of its expression from two separate plasmids. When nuclearly localized myc*Pik1*(Δ 10-192) was coexpressed with cytoplasmically localized myc*Pik1*-CCAAX, the *pik1* Δ spores were able to survive, as judged by recovery of tetrads with three or

four viable spores (Fig. 10 A), and Trp⁺ Leu⁺ Kan^R spores were recovered at a reasonable frequency (not depicted). As judged by immunoblotting, the viable Trp⁺ Leu⁺ Kan^R spores produced both myc*Pik1*-CCAAX and myc*Pik1*(Δ 10-192), albeit sometimes not in equal proportions, and did so in a galactose-dependent manner (Fig. 10 B). Despite the fact that *Pik1*-CCAAX has a catalytic activity indistinguishable from wild-type *Pik1*, expression of this derivative alone from two different plasmids did not rescue inviability of the *pik1* Δ spores because only two viable (and both G418 sensitive) spore colonies were recovered in every tetrad (Fig. 10 A). Because only those *pik1* Δ spores that expressed *Pik1* in both the nucleus and the cytosol survived, it suggests that discrete PtdIns4P pools must be generated for nuclear functions and for secretory transport. The data presented here demonstrate that this is normally achieved by nucleocytoplasmic shuttling of *Pik1* and its Frq1-dependent tethering to the Golgi.

To determine whether the PI4K activity of *Pik1* is required for its function at the Golgi and in the nucleus, we mutated a residue (D918A) that is invariant in all PI4Ks (and PI3Ks). The crystal structure of a type II β PtdIns-phosphate kinase shows the equivalent position makes contact with both ATP and the substrate (Rao et al., 1998). The corresponding myc*Pik1*(D918A), myc*Pik1*(D918A)-CCAAX and myc*Pik1*(Δ 10-192 D918A) proteins were stably expressed (not depicted) and upon immunoprecipitation (Fig. S5 A, bottom, available at <http://www.jcb.org/cgi/content/full/jcb.200504104/DC1>) none of them displayed detectable PI4K activity, whereas myc*Pik1* displayed robust activity under the same conditions (Fig. S5 A, top). In addition, neither myc*Pik1*(D918A) nor GFP-*Pik1*(D918A) was able to complement the inviability of *pik1* Δ spores (Fig. S5 B). Moreover, the mutation did not cause mislocalization because GFP-*Pik1*(D918A) was readily detectable both at Golgi puncta and in the nucleus (Fig. S5 C).

Finally, to determine whether *Pik1* catalytic activity is needed for its essential functions in either compartment, either myc*Pik1*-CCAAX and myc*Pik1*(Δ 10-192 D918A) or myc*Pik1*(D918A)-CCAAX and myc*Pik1*(Δ 10-192) were coexpressed on differentially marked plasmids in the *pik1* Δ ::*KanMX4/PIK1*⁺ diploid, which was subjected to tetrad analysis.

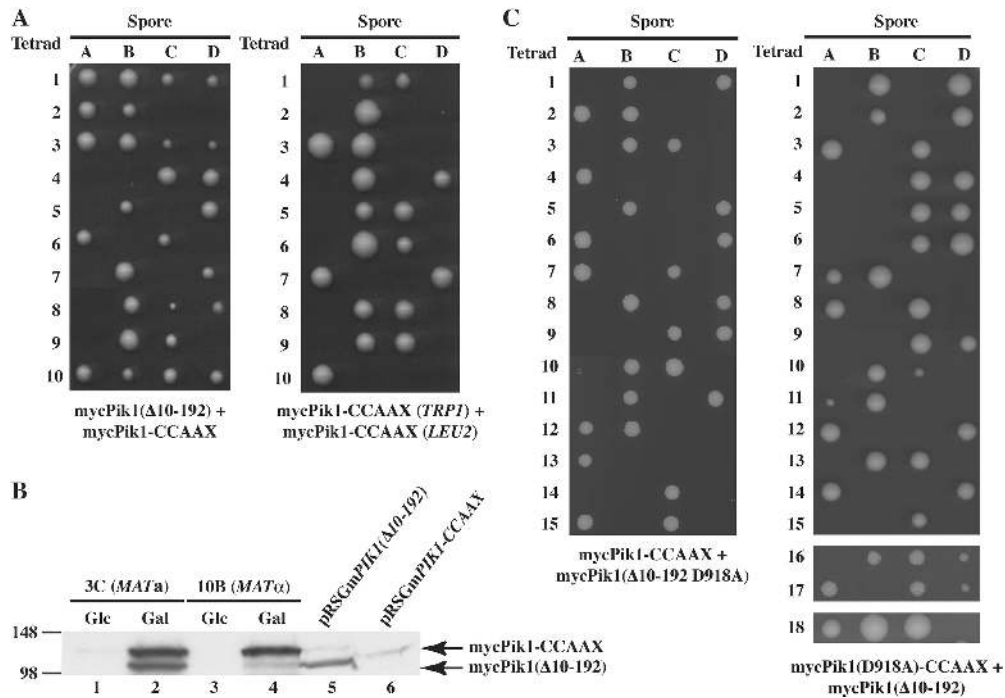


Figure 10. **Interallelic complementation of the inviability of *pik1*Δ cells by *Pik1*-CCAAX and *Pik1*(Δ10-192).** (A) Heterozygous *pik1*Δ::*KanMX4/Pik1* diploid (YTS68) cotransformed with either pTS2 and pTS4 expressing mycPik1(Δ10-192) and mycPik1-CCAAX (left) or pTS3 and pTS4 both expressing mycPik1-CCAAX (right) was sporulated and the resulting tetrads were dissected and germinated on galactose medium. Spore clones (A–D) from 10 representative tetrads (1–10) are shown. (B) Two representative G418-resistant colonies of opposite mating type were picked, propagated on galactose (Gal) or then shifted to glucose medium (Glc), and samples of the cultures were lysed and analyzed by SDS-PAGE and immunoblotting with αMyc mAb 9E10. As markers, samples of lysates from cells expressing only mycPik1(Δ10-192) (lane 5) or mycPik1-CCAAX (lane 6) were examined. (C) Tetrad analysis, as in A, was conducted with YTS68 coexpressing either mycPik1-CCAAX and mycPik1(Δ10-192 D918A) (left) or mycPik1(D918A)-CCAAX and mycPik1(Δ10-192) (right).

For the former combination, only two viable (and G418-sensitive) spores were recovered from every tetrad (Fig. 10 C, left panel), indicating that the kinase activity of *Pik1* is essential for its nuclear function. For the latter combination, the vast majority of the tetrads (~90 total) also yielded only two viable (and G418-sensitive) spores; however, in each of three tetrads, one of the *pik1*Δ (*Kan*^R) spores was recovered and carried both plasmid markers (*Leu*⁺ and *Trp*⁺). Nonetheless, when subsequently propagated, these cells grew very slowly (especially on glucose, where wild-type *Pik1* expressed from the *GALI* promoter supports a normal growth rate, even when repressed), appeared grossly enlarged, were highly vacuolated and/or accumulated apparent vesicular material in the cytosol (data not shown). Clearly, therefore, the kinase activity of *Pik1* is also important for its function at the Golgi.

Discussion

This is the first comprehensive study of *Pik1* localization in live cells. Our findings confirm our own prior observations (Schnieders, 1996; Hama et al., 1999) and those of others (Walch-Solimena and Novick, 1999; Sciorra et al., 2005), but significantly extend those conclusions and provide new insights about the factors that regulate subcellular localization of this PI4K. In particular, we demonstrated that *Pik1* enters the nucleus and undergoes active nucleocytoplasmic shuttling. Moreover, we showed that a primary role of its tightly bound

regulatory subunit, *Frq1*, is to assist with targeting of *Pik1* to the cytoplasmic face of the Golgi. By preventing cycling of *Pik1* between the nucleus and the cytosol and, conversely, by coexpressing *Pik1* derivatives restricted to each of those compartments, we found that execution of the cellular functions of *Pik1* requires its presence in catalytically active form both in the nucleus and at the Golgi.

Pik1 and *Stt4* catalyze the same biochemical reaction, but play nonoverlapping roles, as deletion of either gene is lethal and overexpression of each gene cannot compensate for the loss of the other. This lack of redundancy is now explained by localization of each essential PI4K to distinct compartments: *Stt4* to the PM (Audhya and Emr, 2002) and *Pik1* at the Golgi and in the nucleus. Dual localization of *Pik1* is not an artifact of overexpression because it was observed when cells expressed GFP-*Pik1* from its own promoter on a low-copy-number vector. Moreover, nuclear entry of *Pik1* was blocked by the loss of a specific importin (*Kap95*), and nuclear exit was blocked by the loss of a specific exportin (*Msn5*). But, we cannot exclude the possibility that other karyopherins may make minor contributions to nucleocytoplasmic transport of *Pik1*.

Cytosolic *Pik1* localizes to the Golgi. Residence of *Pik1* on this compartment is in accord with prior evidence that *Pik1*-generated *PtdIns4P* is important for efficient formation of Golgi-derived secretory vesicles destined for exocytosis at the PM (Hama et al., 1999; Walch-Solimena and Novick, 1999; Audhya et al., 2000). The *Pik1*-containing cytosolic puncta

were identified as Golgi via colocalization with an Arf-GEF, Sec7, a well-accepted marker for this organelle in yeast (Franzoso et al., 1991). Reportedly, Arf itself has a role in recruitment of PI4KIII β to the Golgi in tissue culture cells (Godi et al., 1999). Treatment of yeast cells with brefeldin A, which inhibits Sec7 GEF activity in vitro (Sata et al., 1998), causes aberrant Golgi to accumulate and blocks secretory transport (Chang et al., 2004), closely resembling the abnormal structures accumulated and the marked reduction in protein secretion seen in temperature-sensitive *pik1* mutants at the restrictive temperature. However, we have no direct evidence that any yeast Arf involved in anterograde secretory transport is required for Pik1 function (unpublished data). Rather, as shown here, its regulatory subunit, Frq1, is targeted to the Golgi and is required for recruitment of Pik1 to the Golgi. Indeed, after our discovery of Frq1 as a permanently bound positive regulator of Pik1 in yeast (Hendricks et al., 1999), evidence has accumulated that its mammalian orthologue plays a similar role in localizing PI4KIII β at the Golgi (Bourne et al., 2001; Kapp-Barnea et al., 2003; Haynes et al., 2005).

PtdIns4P generated by Pik1 at the Golgi is not efficiently converted to PtdIns4,5P₂ presumably because the PtdIns4P 5-kinase, Mss4, localizes to the PM and to the nucleus, but not to the Golgi (Desrivieres et al., 1998; Audhya and Emr, 2003). In addition, Inp53/Sjl3, a PIP 5-phosphatase that operates at the Golgi (Ha et al., 2003), may prevent inadvertent or premature conversion of PtdIns4P to PtdIns4,5P₂ before secretory vesicles reach the PM. It is assumed that Pik1-generated PtdIns4P serves as a specific docking epitope on the Golgi membrane for recruitment of other proteins that are involved in vesicle formation and trafficking. Although certain yeast proteins have PH domains (Levine and Munro, 2002) and PH-like domains (Li et al., 2002) that mediate their Pik1-dependent and PtdIns4P-specific localization to the Golgi, these polypeptides are not individually required for secretion. Recently, an automated global screen for mutations synthetically lethal with a *pik1^{ts}* allele implicated Gyp2, the cognate GAP for a Golgi-specific Rab family member (Ypt31), as a potential candidate (Sciorra et al., 2005). Gyp2 contains a conserved GRAM domain (Doerks et al., 2000), which is a structural motif that resembles that of PH domains (Begley et al., 2003). Whether GRAM domains bind PIPs is, however, somewhat controversial (Begley et al., 2003). Moreover, mutations in the GRAM domain that make Gyp2 nonfunctional in vivo did not alter the subcellular distribution of GFP-Gyp2 nor is a *gyp2 Δ* mutant inviable. Hence, the identity of the PtdIns4P-binding protein(s) required for secretion remains elusive.

In this regard, one study showed that PI4KIII β (but not its kinase activity) is necessary to recruit Rab11 (the mammalian Ypt31 orthologue) to the Golgi, and that this interaction is important for subsequent membrane traffic from the Golgi to the PM (de Graaf et al., 2004). However, in addition to the tagged PI4KIII β derivatives followed, catalytically active endogenous PI4KIII β was present in the same cells. In yeast, it is claimed that Lsb6 contributes to endosome motility independent of its own ability to generate PtdIns4P (Chang et al., 2005), but Stt4 at the PM could supply PIPs for endocytosis and control of actin dynamics.

In any event, it seems well established that one vital function of Pik1 is executed at the Golgi. However, as shown here, it is not sufficient for cell viability to restrain Pik1 to the cytosol or even to Golgi membranes. When expressed alone, Pik1-CCAAX, which is stable, fully catalytically active, present abundantly at the Golgi, and able to generate copious amounts of PtdIns4P at the Golgi—as judged by decoration with a PtdIns4P-specific reporter, GFP-2X-PH-domain^{Osh2} (Levine and Munro, 2002; unpublished data)—was unable to support the viability of *pik1 Δ* cells. Thus, the essential functions of Pik1 are not confined to the Golgi and to the secretory process. Indeed, when Pik1-CCAAX was coexpressed with Pik1(Δ 10-192) (which is only feebly active, unable to complement a *pik1 Δ* mutation, and largely confined to the nucleus), the simultaneous presence of these two proteins was able to rescue the inviability of *pik1 Δ* cells. When Pik1-CCAAX was coexpressed with catalytically inactive Pik1(Δ 10-192), the cells were dead, confirming that PtdIns4P supplied by Pik1 in the nucleus is essential for cell function.

There is considerable evidence that PtdIns4,5P₂ is present in the *S. cerevisiae* nucleus and is cleaved by the PLC δ 1 orthologue, Plc1 (Flick and Thorner, 1993), to generate IP₃ and other more highly phosphorylated IP_xs derived from it, which have apparent roles in regulating mRNA export (York et al., 1999), modulating transcription (Odom et al., 2000) perhaps via chromatin-remodeling complexes (Shen et al., 2003; Steger et al., 2003), and influencing telomere length (York et al., 2005). Our results pinpoint Pik1 as the PI4K that is responsible for supplying the nuclear pool of PtdIns4P and, because Mss4 also traffics to the nucleus, at least some of this lipid is presumably converted to PtdIns4,5P₂ to supply the substrate for Plc1. Like Pik1 and Mss4, Plc1 also undergoes active nucleocytoplasmic shuttling (Huynh, 1998). Thus, the cell brings the necessary machinery into the nucleus to ensure that these products are generated in situ. Given that IP_xs are small enough to freely traverse the nuclear pore complex by passive diffusion, it is perhaps not surprising that generation of IP_xs in the cytosol by contrived means is sufficient to support their nuclear functions (Miller et al., 2004). However, we find that when Plc1 is confined to the nucleus by point mutations that ablate its Xpo1-dependent nuclear export sequence, the rate and extent of IP₃ production and generation of its more highly phosphorylated derivatives is elevated (unpublished data). Thus, most likely, soluble IP_xs normally are generated locally within the nucleus via Plc1-dependent cleavage of the PtdIns4,5P₂ supplied by Pik1 and Mss4 action.

However, *plc1 Δ* mutants are viable (under nonstressful conditions; Flick and Thorner, 1993), whereas *pik1 Δ* mutations are lethal under all conditions (Flanagan et al., 1993). Therefore, the PtdIns4P (and/or PtdIns4,5P₂) derived from Pik1 action in the nucleus is not solely used as the substrate for Plc1, but must have some other essential function(s). Current evidence suggests that this essential role might be transcription. Mammalian tumor suppressor protein, ING2, is a member of a family of at least six, highly related chromatin-associated proteins and contains a plant homeodomain (PHD) motif that reportedly binds PtdIns4,5P₂ and PtdIns5P (Gozani et al.,

2003). Four close relatives of ING2 exist in the *S. cerevisiae* genome, all contain PHD motifs, and all are components of nuclear chromatin remodeling machines involved in gene regulation. Whether yeast PHD proteins bind PIPs is not known.

Also, tethering of transcription factors to integral membrane proteins on the inner face of the yeast nuclear envelope seems to have a critical role in regulating the expression of certain essential genes during the unfolded protein response and presumably during adaptation to other cellular stresses (Brickner and Walter, 2004). Perhaps Pik1-generated PIPs affect organization, stability, or function of the nuclear envelope proteins required for this transcriptional control. However, like other secretory blocks, shift of *pik1^{ts}* mutants to restrictive temperature induces robust *UPR-lacZ* reporter expression (unpublished data); hence, sustained Pik1-dependent PIP production is not needed, at least for the unfolded protein response. Potential involvement of Pik1-derived products in transcriptional regulation may be coupled to a perhaps related phenomenon. Certain proteins that reside in the nucleus rapidly relocalize to the cytosol when the secretory pathway is compromised (Nanduri et al., 1999). The so-called cell integrity MAPK signaling pathway initiated by Pkc1 is reportedly necessary for this response (Li et al., 2000; Nanduri and Tartakoff, 2001). When a secretion-defective mutant (*sec6-4*) was shifted to restrictive temperature for only 10 min, all nuclearly associated Pik1 was lost (Walch-Solimena and Novick, 1999). Hence, Pik1 may be a protein that rapidly relocalizes to the cytosol upon secretory stress. Nucleocytoplasmic shuttling of Pik1 may, therefore, be under regulation and Pik1 itself (or some component involved in its nucleocytoplasmic transport) may be a target of Pkc1 or of the MAPK (Mpk1/Stt2) it activates.

Materials and methods

Construction of plasmids

Plasmids (Table I) were constructed using standard recombinant DNA methods. *Escherichia coli* strains DH5 α and NM522 were used to manipulate and propagate plasmids. PCR was performed using *Pfu* DNA polymerase (Stratagene); all constructs were verified by dideoxy chain termination sequencing. To produce kinase-dead Pik1, DNA fragments encoding a D918A mutation were generated by PCR using appropriate primers and incorporated by homologous recombination-mediated double strand break repair in vivo via cotransformation with acceptor vectors linearized with PflMI and BspEI (pTS12 and pTS16), BglII and BspEI (pTS13) or NheI and SacI (pTS15) in strain BJ2407. Plasmid DNA recovered from the resulting Leu⁺ or Trp⁺ transformants was rescued and amplified in *E. coli*. A YE_p24-based plasmid encoding *PEP4* (pBJ2802; gift of E.W. Jones, Carnegie Mellon University, Pittsburgh, PA) was used to allow sporulation of the protease-deficient diploid strain BJ2407. GEX2TK-KAP95-HIS₆ (gift of M. Rexach, Stanford University, Stanford, CA) was used to prepare GST-Kap95-His₆ in *E. coli*.

Yeast strains, growth conditions, and tetrad dissections

Yeast strains used in this study are listed in Table II. Standard rich (YP) and synthetic complete media (Sherman et al., 1986) were supplemented with either 2% glucose, 2% raffinose, or 2% galactose and with appropriate nutrients to maintain selection for plasmids. Yeast was cultivated at 30°C, unless otherwise stated. Standard methods for DNA-mediated transformation, sporulation, tetrad dissection, and other genetic manipulations of yeast cells were used (Guthrie and Fink, 1991). To generate a novel *pik1* null allele, a KANMX4 cassette, flanked by short stretches (45 bp) of homology to sequences immediately upstream and downstream of the *PIK1* coding region in the yeast genome, was amplified in a standard PCR reaction using pFA6 α -KANMX4 as the template. The resulting DNA fragments were introduced by DNA-mediated transformation into strain BJ2407, and the cells were plated on YPD medium containing 200 μ g/liter G418 sulfate (Mediatech Inc.). Candidate antibiotic-resistant integrants were restreaked on the same medium containing G418 and authentic replacement of the *PIK1* locus by the *pik1 Δ ::KANMX4* allele on one homologue was verified by analytical PCR using appropriate primers. Strains YTS129 and YTS131 were generated in a similar manner, using strain BY4743 and

Table I. Plasmids used in this study

Plasmid	Marker	Promoter	Insert	Reference or source
pRS314mycPIK1	TRP1	PIK1	mycPIK1	Hendricks et al., 1999
pRS314GAL-mycPIK1	TRP1	PIK1	mycPIK1	Hendricks et al., 1999
pTS12 ^a	TRP1	GAL1	mycPIK1(D918A)	This study
pTS1	TRP1	GAL1	mycPIK1(Δ 302-785)	This study
pTS2	TRP1	GAL1	mycPIK1(Δ 10-192)	This study
pTS13	LEU2	GAL1	mycPIK1(Δ 10-192)	This study
pTS14	LEU2	GAL1	mycPIK1 (Δ 10-192 D918A)	This study
pTS3	TRP1	GAL1	mycPIK1-CCAAX	This study
pTS15	TRP1	GAL1	mycPIK1(D918A)-CCAAX	This study
pTS4	LEU2	GAL1	mycPIK1-CCAAX	This study
pRS314GAL-mycPIK1(Δ 793-1066)	TRP1	GAL1	mycPIK1(Δ 793-1066)	Hendricks et al., 1999
pTS6	TRP1	PIK1	GFP-PIK1	This study
pTS7	TRP1	GAL1	GFP-PIK1	This study
pTS8	LEU2	PIK1	GFP-PIK1	This study
pTS9	LEU2	GAL1	GFP-PIK1	This study
pTS16	LEU2	GAL1	GFP-PIK1(D918A)	This study
pTS10	LEU2	GAL1	GFP-PIK1(Δ 152-191)	This study
pTS11	LEU2	GAL1	GFP-PIK1-CCAAX	This study
pFA6 α -kanMX4	kan ^r	TEV	KanMX4	Longtine et al., 1998
pFA6 α -GFP(S65T)-kanMX6	kan ^r	TEV	GFP(S65T)-KanMX6	Longtine et al., 1998
BJ2802	URA3	PEP4	PEP4	E.W. Jones
pGST-Kap95-His ₆	Amp ^R	tac	GST-KAP95-His ₆	M. Rexach
YE _p 352GAL-PIK1	URA3	GAL1	PIK1	Hendricks et al., 1999
Ylplac204-T/C-SEC7-DsRed.T4	TRP1	TPI1	SEC7-DsRed	Reinke et al., 2004

^aAll pTS plasmids are based either on pRS314 (TRP1) or pRS315 (LEU2) (Sikorski & Hieter, 1989).

appropriate primers to replace the *PSE1* or *MTR10* chromosomal loci, respectively, with a *KANMX4* cassette. A one-step PCR-based technique for targeted modification of chromosomal loci (Longtine et al., 1998) was used to generate *FRQ1-GFP*. In brief, oligonucleotide primers with 5'-ends corresponding, respectively, to the last 40 bp of the *FRQ1* ORF (forward) or to the first 40 bp downstream of the respective stop codons (reverse), and with 3'-ends to allow in-frame amplification of the *GFP* (*S65T*)-*KanMX6* cassette, were used for PCR with pFA6a-*GFP*(*S65T*)-*KanMX6* as the template. The resulting DNA products were purified, introduced by transformation into strain BY4743, and G418-resistant transformants were selected. Genomic DNA was prepared from candidate clones to verify its integration by homologous recombination at the *FRQ1* locus and sequenced to confirm the integrity of the construct. For integration of Ylplac204-T/C-*SEC7*-DsRed.T4, the plasmid was cut with *Bsu36 I* before transformation.

Fluorescence microscopy and indirect immunofluorescence

To view GFP and/or DsRed fusion proteins, cells were grown to mid-exponential phase and examined directly under a fluorescence microscope equipped with appropriate band-pass filters for detection of each protein. To counterstain for DNA, cells were incubated in growth medium with 2 µg/ml Hoechst 33258 (Invitrogen) for 15 min before viewing. Unless otherwise noted, expression of GFP fusion proteins under control of the *GAL1* promoter was induced by adding galactose (2% final concentration) to the culture and, after 45 min, glucose was added (2% final concentration) to repress further expression and the cells were grown for 1 h. To localize GFP-Pik1 in strains SWY1312 and SWY1313, cells first were grown at 26°C, shifted to 37°C for 1 h, and then galactose was added to induce *GAL1* promoter-driven expression; after 3 h, the cells were viewed by fluorescence microscopy. To localize GFP-Pik1 in strains YTS0012 and W303-1a (*kap60^{ts}* and *KAP60⁺*, respectively), cells were

Table II. Strains used in this study

Strain	Genotype	Reference or source
BJ2168	<i>MATa leu2 trp1 ura3-52 prb1-1122 prc1-40 pep4-3 gal2</i>	Jones, 1991
CFY13	<i>hsc83Δ::LEU2 pep4Δ::URA3</i> (derived from BJ2168)	Flanagan and Thorner, 1992
BJ2407	<i>MATa/MATa</i> (otherwise isogenic to BJ2168)	Jones, 1991
YTS68	<i>pik1Δ::KanMX4/PIK1</i> [pBJ2802] (otherwise isogenic to BJ2407)	This study
YTS153	<i>FRQ1-GFPkanMX6::FRQ1/FRQ1 SEC7-DsRed::TRP1/TRP1</i> (otherwise isogenic to BJ2407)	This study
BY4743	<i>MATa/MATa his3-Δ1/his3-Δ1 leu2-Δ0/leu2-Δ0</i> <i>lys2-Δ0/lys2-Δ0 ura3-Δ0/ura3-Δ0</i>	Brachmann et al., 1998
YTS001	<i>los1Δ/los1Δ</i> (otherwise isogenic to BY4743)	Brachmann et al., 1998
YTS002	<i>msn5Δ/msn5Δ</i> (otherwise isogenic to BY4743)	Brachmann et al., 1998
YTS005	<i>kap108Δ/kap108Δ</i> (otherwise isogenic to BY4743)	Brachmann et al., 1998
YTS006	<i>kap114Δ/kap114Δ</i> (otherwise isogenic to BY4743)	Brachmann et al., 1998
YTS007	<i>kap120Δ/kap120Δ</i> (otherwise isogenic to BY4743)	Brachmann et al., 1998
YTS008	<i>kap122Δ/kap122Δ</i> (otherwise isogenic to BY4743)	Brachmann et al., 1998
YTS009	<i>kap123Δ/kap123Δ</i> (otherwise isogenic to BY4743)	Brachmann et al., 1998
BY4741	<i>MATa</i> (otherwise isogenic to BY4743)	Brachmann et al., 1998
YTS129	<i>pse1Δ::KanMX4</i> (otherwise isogenic to BY4741)	This study
YTS131	<i>mtr10Δ::KanMX4</i> (otherwise isogenic to BY4741)	This study
KWY12	<i>MATa ade2-101 his3-11,15 trp1-Δ901 ura3-52</i>	Xiao et al., 1993
KWY125	<i>cse1-1</i> (otherwise isogenic to KWY124)	Xiao et al., 1993
BYB67	<i>MATa/MATa ADE2/ade2-1 can1-100/can1-100</i> <i>his3-11,15/his3-11,15 leu2-3,112/leu2-3,112</i> <i>LYS2/lys2Δ::hisG trp1-1/trp1-1 ura3-1/ura3-1</i> (derived from W303)	Shulewitz et al., 1999
W303-1a	<i>MATa ade2-1 LYS2</i> (derived from W303)	Loeb et al., 1995
KWY121	<i>MATa ade2-1 LYS2 xpo1Δ::LEU2</i> [pKW457/pRS313- <i>xpo1-1^{ts}</i>] (otherwise isogenic to W303-1a)	Stade et al., 1997
YKBH9	W303-1a [YEp352GAL-PIK1]	Hendricks et al., 1999
RSY298	<i>sec7-1^{ts}</i> (otherwise isogenic to W303-1a)	Esmon et al., 1981
YTS001	<i>srp1-31^{ts}</i> (otherwise isogenic to W303-1a)	Loeb et al., 1995
YTS0010	<i>MATa his3-Δ200 leu2-3, 2-112 lys2-801 trp1-1</i> <i>ura3-52 kap104Δ::URA3</i>	Aitchison et al., 1996
YTS0011	<i>MATa his3-Δ200 leu2-3, 2-112 lys2-801 trp1-1</i> <i>ura3-52 nmd5Δ::HIS3</i>	Albertini et al., 1998
SWY1312	<i>MATa ade2-1 can1-100 his3-11,15 leu2-3,112 trp1-1</i> <i>ura3-1 kap95Δ::HIS3</i> [pSW503/pRS315-KAP95]	lovine and Wentz, 1997
SWY1313	<i>MATa ade2-1 can1-100 his3-11,15 leu2-3,112 trp1-1</i> <i>ura3-1 kap95Δ::HIS3</i> [pSW509/pRS315- <i>kap95</i> (L63A) ^{ts}]	lovine and Wentz, 1997
YPH499	<i>MATa ade2-101^{och} his3-Δ200 leu2-Δ1 lys2-801^{om}</i> <i>trp1-Δ63 ura3-52</i>	Sikorski and Hieter, 1989
YKBH4	<i>frq1-1::HIS3</i> (otherwise isogenic to YPH499)	Hendricks et al., 1999
YES32	<i>PIK1::TRP1</i> (otherwise isogenic to YPH499)	Schnieders, 1996
YES102	<i>pik1-83::TRP1</i> (otherwise isogenic to YPH499)	Schnieders, 1996
YTS114	<i>prom^{TRP1}-SEC7-DsRed::TRP1</i> [pTS8] (otherwise isogenic to YPH499)	This study
CTY1-1a	<i>MATa his3-Δ200 lys2-801 ura3-52 sec14-3</i>	Hama et al., 1999

treated as just described, but incubated at 37°C for as long as 5 h after galactose induction.

BYB67 cells carrying plasmids for the *GAL1* promoter-driven expression of either mycPik1, mycPik1(Δ 10-192) or mycPik1-CCAAX were grown to $A_{600\text{ nm}} \approx 0.5$, induced by addition of galactose (2% final concentration) for 90 min, fixed, and prepared for indirect immunofluorescence. Cells were incubated with a solution (1 mg/ml) of affinity-purified α Myc mAb 9E10 that was diluted 1:150 in PBS, pH 7.3, containing 1 mg/ml BSA (PBSA) for 2 h at RT, washed three times with PBSA, and then incubated for 1 h with FITC-conjugated secondary antibody (Jackson ImmunoResearch Laboratories) that was diluted 1:700 in PBSA. To counterstain for DNA, DAPI was added (1 μ g/ml final concentration) during the last 2 min of incubation. Subsequently, cells were washed six times with PBS, mounted in Citifluor (Ted Pella Inc.), examined under either a Plan Apo 100 \times /1.4 oil objective on a fluorescence microscope (Eclipse TE300; Nikon) equipped with a charged-coupled device camera (Orca 100; Hamamatsu) and compatible software (Phase 3 Imaging Systems, Inc.) or a D Plan Apo UV 100 \times /1.3 oil objective on a BH-2 fluorescence microscope equipped with a MagnaFire SP charged-coupled device camera and software (Olympus).

Preparation of yeast cell extracts and immunoprecipitation

Yeast cell lysis, preparation of extracts, and immunoprecipitations were performed as described previously (Hendricks et al., 1999; Huttner et al., 2003).

Online supplemental material

Supplemental materials and methods section describes the following protocols: negative stain and immunogold EM; preparation of Kap95-His6 and in vitro binding studies; invertase secretion measurement; and measurement of PI4K activity. Fig. S1 shows aberrant membrane structures accumulated in *pik1^{ts}* mutants at restrictive temperature are hypertrophied cisternae enriched in Golgi marker proteins. Fig. S2 shows purified importin- β binds Pik1. Fig. S3 depicts a *frq1^{ts}* mutant is defective in secretory transport and accumulates aberrant membrane structures at restrictive temperatures. Fig. S4 shows that both Pik1-CCAAX and Pik1(Δ 10-192) are catalytically active. Fig. S5 characterizes the catalytically inactive mutant, Pik1(D918A). Online supplemental material is available at <http://www.jcb.org/cgi/content/full/jcb.200504104/DC1>.

We thank J. Abbruzzese and W. McManus for assistance with performing EM, and B. Glick, K.B. Hendricks, E.V. Jones, S. Patel, M. Rexach, B.Q. Wang, K. Weis, and S. Wente for strains, plasmids, or advice.

This work was supported by a grant from the American Cancer Society and funds from the Utah Agricultural Experiment Station (to D.B. DeWald) and by the National Institutes of Health Research Grant GM21841, by a grant from the Lowe Syndrome Association, and by facilities provided by the Berkeley campus Cancer Research Laboratory (to J. Thorne).

Received: 19 April 2005

Accepted: 17 November 2005

References

- Aitchison, J.D., G. Blobel, and M.P. Rout. 1996. Kap104p: a karyopherin involved in the nuclear transport of messenger RNA binding proteins. *Science*. 274:624–627.
- Albertini, M., L.F. Pemberton, J.S. Rosenblum, and G. Blobel. 1998. A novel nuclear import pathway for the transcription factor TFIIIS. *J. Cell Biol.* 143:1447–1455.
- Ames, J.B., K.B. Hendricks, T. Strahl, I.G. Huttner, N. Hamasaki, and J. Thorne. 2000. Structure and calcium-binding properties of Frq1, a novel calcium sensor in the yeast *Saccharomyces cerevisiae*. *Biochemistry*. 39:12149–12161.
- Audhya, A., and S.D. Emr. 2002. Stt4 PI 4-kinase localizes to the plasma membrane and functions in the Pkc1-mediated MAP kinase cascade. *Dev. Cell*. 2:593–605.
- Audhya, A., and S.D. Emr. 2003. Regulation of PI4,5P2 synthesis by nuclear-cytoplasmic shuttling of the Mss4 lipid kinase. *EMBO J.* 22:4223–4236.
- Audhya, A., M. Foti, and S.D. Emr. 2000. Distinct roles for the yeast phosphatidylinositol 4-kinases, Stt4p and Pik1p, in secretion, cell growth, and organelle membrane dynamics. *Mol. Biol. Cell.* 11:2673–2689.
- Begley, M.J., G.S. Taylor, S.-A. Kim, D.M. Veine, J.E. Dixon, and J.A. Stuckey. 2003. Crystal structure of a phosphoinositide phosphatase, MTMR 2, insights into myotubular myopathy and Charcot-Marie Tooth Syndrome. *Mol. Cell.* 12:1391–1402.
- Bourne, Y., J. Dannenberg, V. Pollmann, P. Marchot, and O. Pongs. 2001. Immunocytochemical localization and crystal structure of human frequenin (neuronal calcium sensor 1). *J. Biol. Chem.* 276:11949–11955.
- Brachmann, C.B., A. Davies, G.J. Cost, E. Caputo, J. Li, P. Hieter, and J.D. Boeke. 1998. Designer deletion strains derived from *Saccharomyces cerevisiae* S288C: a useful set of strains and plasmids for PCR-mediated gene disruption and other applications. *Yeast*. 14:115–132.
- Brickner, J.H., and P. Walter. 2004. Gene recruitment of the activated *INO1* locus to the nuclear membrane. *PLoS Biol.* 10.1371/journal.pbio.0020342.
- Chang, F.S., G.-S. Han, G.M. Carman, and K.J. Blumer. 2005. A WASp-binding type II phosphatidylinositol 4-kinase required for actin polymerization-driven endosome motility. *J. Cell Biol.* 171:133–142.
- Chang, H.J., S.A. Jesch, M.L. Gaspa, and S.A. Henry. 2004. Role of the unfolded protein response pathway in secretory stress and regulation of *INO1* expression in *Saccharomyces cerevisiae*. *Genetics*. 168:1899–1913.
- de Graaf, P., W.T. Zwart, R.A.J. van Dijken, M. Deneka, T.K.F. Schulz, N. Geijssen, P.J. Coffey, B.M. Gadella, A.J. Verkleij, P. van der Sluijs, and P.M. van Bergen en Henegouwen. 2004. Phosphatidylinositol 4-kinase β is critical for association of rab11 with the golgi complex. *Mol. Biol. Cell.* 15:2038–2047.
- Desrivieres, S., F.T. Cooke, P.J. Parker, and M.N. Hall. 1998. MSS4, a phosphatidylinositol-4-phosphate 5-kinase required for organization of the actin cytoskeleton in *Saccharomyces cerevisiae*. *J. Biol. Chem.* 273:15787–15793.
- Doerks, T., M. Strauss, M. Brendel, and P. Bork. 2000. GRAM, a novel domain in glucosyltransferases, myotubularin, and other putative membrane-associated proteins. *Trends Biochem. Sci.* 25:483–485.
- Enekel, C., G. Blobel, and M. Rexach. 1995. Identification of a yeast karyopherin heterodimer that targets import substrate to mammalian nuclear pore complexes. *J. Biol. Chem.* 270:16499–16502.
- Esmon, B., P. Novick, and R. Schekman. 1981. Compartmentalized assembly of oligosaccharides on exported glycoproteins in yeast. *Cell*. 25:451–460.
- Flanagan, C.A., and J. Thorne. 1992. Purification and characterization of a soluble phosphatidylinositol 4-kinase from the yeast *Saccharomyces cerevisiae*. *J. Biol. Chem.* 267:24117–24125.
- Flanagan, C.A., E.A. Schnieders, A.W. Emerick, R. Kunisawa, A. Admon, and J. Thorne. 1993. Phosphatidylinositol 4-kinase: gene structure and requirement for yeast cell viability. *Science*. 262:1444–1448.
- Flick, J.S., and J. Thorne. 1993. Genetic and biochemical characterization of a phosphatidylinositol-specific phospholipase C in *Saccharomyces cerevisiae*. *Mol. Cell. Biol.* 13:5861–5876.
- Franzusoff, A., K. Redding, J. Crosby, R.S. Fuller, and R. Schekman. 1991. Localization of components involved in protein transport and processing through the yeast Golgi apparatus. *J. Cell Biol.* 112:27–37.
- Garcia-Bustos, J.F., F. Marini, I. Stevenson, C. Frei, and M.N. Hall. 1994. PIK1, an essential phosphatidylinositol 4-kinase associated with the yeast nucleus. *EMBO J.* 13:2352–2361.
- Godi, A., P. Pertile, R. Meyers, P. Marra, G. Di Tullio, C. Iurisci, A. Luini, D. Corda, and M.A. De Matteis. 1999. ARF mediates recruitment of PtdIns-4-OH kinase-beta and stimulates synthesis of PtdIns(4,5)P-2 on the Golgi complex. *Nat. Cell Biol.* 1:280–287.
- Gozani, O., P. Karuman, D.R. Jones, D. Ivanov, J. Cha, A.A. Lugovskoy, C.L. Baird, H. Zhu, S.J. Field, S.L. Lessnick, et al. 2003. The PHD finger of the chromatin-associated protein ING2 functions as a nuclear phosphoinositide receptor. *Cell*. 114:99–111.
- Guthrie, C., and G.R. Fink. 1991. *Guide to yeast genetics and molecular biology*. Methods in Enzymology, vol. 194, ed. J.N. Abelson and M.I. Simon. New York: Academic Press, Inc.
- Ha, S.A., J. Torabinejad, D.B. DeWald, M.R. Wenk, L. Lucast, P. De Camilli, R.A. Newitt, R. Aebersold, and S.F. Nothwehr. 2003. The synaptotagmin-like protein Inp53/Sj13 functions with clathrin in a yeast TGN-to-endosome pathway distinct from the GGA protein-dependent pathway. *Mol. Biol. Cell.* 14:1319–1333.
- Hama, H., E.A. Schnieders, J. Thorne, J.Y. Takemoto, and D.B. DeWald. 1999. Direct involvement of phosphatidylinositol 4-phosphate in secretion in the yeast *Saccharomyces cerevisiae*. *J. Biol. Chem.* 274:34294–34300.
- Han, G.S., A. Audhya, D.J. Markley, S.D. Emr, and G.M. Carman. 2002. The *Saccharomyces cerevisiae* *LSB6* gene encodes phosphatidylinositol 4-kinase activity. *J. Biol. Chem.* 277:47709–47718.
- Hancock, J.F. 2003. Ras proteins: different signals from different locations. *Nat. Rev. Mol. Cell Biol.* 4:373–384.
- Haynes, L.P., G.M. Thomas, and R.D. Burgoyne. 2005. Interaction of neuronal calcium sensor-1 and ADP-ribosylation factor 1 allows bidirectional control of phosphatidylinositol 4-kinase beta and trans-Golgi network-plasma membrane traffic. *J. Biol. Chem.* 280:6047–6054.
- Heilmeyer, L.M., Jr., G. Vereb Jr., G. Vereb, A. Kakuk, and I. Szivak. 2003. Mammalian phosphatidylinositol 4-kinases. *IUBMB Life*. 55:59–65.
- Hendricks, K.B., B.Q. Wang, E.A. Schnieders, and J. Thorne. 1999. Yeast ho-

- mologue of neuronal frequenin is a regulator of phosphatidylinositol-4-OH kinase. *Nat. Cell Biol.* 1:234–241.
- Huh, W.K., J.V. Falvo, L.C. Gerke, A.S. Carroll, R.W. Howson, J.S. Weissman, and E.K. O'Shea. 2003. Global analysis of protein localization in budding yeast. *Nature.* 425:686–691.
- Huttner, I.G., T. Strahl, M. Osawa, D.S. King, J.B. Ames, and J. Thorner. 2003. Molecular interactions of yeast frequenin (Frq1) with the phosphatidylinositol 4-kinase isoform, Pik1. *J. Biol. Chem.* 278:4862–4874.
- Huynh, C.V. 1998. Molecular genetic analysis of a phosphoinositide-specific phospholipase C (PLC1 gene product) in the yeast *Saccharomyces cerevisiae*. Ph.D. thesis. University of California, Berkeley, Berkeley, CA. 173 pp.
- Iovine, M.K., and S.R. Wente. 1997. A nuclear export signal in Kap95p is required for both recycling the import factor and interaction with the nucleoporin GLFG repeat regions of Nup116p and Nup100p. *J. Cell Biol.* 137:797–811.
- Irvine, R.F. 2003. Nuclear lipid signaling. *Nat. Rev. Mol. Cell Biol.* 4:349–360.
- Jones, E.W. 1991. Tackling the protease problem in yeast. *Methods Enzymol.* 194:428–435.
- Kamada, Y., H. Qadota, C.P. Python, Y. Anraku, Y. Ohya, and D.E. Levin. 1996. Activation of yeast protein kinase C by Rho1 GTPase. *J. Biol. Chem.* 271:9193–9196.
- Kapp-Barnea, Y., S. Melnikov, I. Shefler, A. Jeromin, and R. Sagi-Eisenberg. 2003. Neuronal calcium sensor-1 and phosphatidylinositol 4-kinase beta regulate IgE receptor-triggered exocytosis in cultured mast cells. *J. Immunol.* 171:5320–5327.
- Levin, D.E., F.O. Fields, R. Kunisawa, J.M. Bishop, and J. Thorner. 1990. A candidate protein kinase C gene, PKC1, is required for the *S. cerevisiae* cell cycle. *Cell.* 62:213–224.
- Levine, T.P., and S. Munro. 2002. Targeting of Golgi-specific pleckstrin homology domains involves both PtdIns 4-kinase-dependent and -independent components. *Curr. Biol.* 12:695–704.
- Li, X., M.P. Rivas, M. Fang, J. Marchena, B. Mehrotra, A. Chaudhary, L. Feng, G.D. Prestwich, and V.A. Bankaitis. 2002. Analysis of oxysterol binding protein homologue Kes1p function in regulation of Sec14p-dependent protein transport from the yeast Golgi complex. *J. Cell Biol.* 157:63–77.
- Li, Y., R.D. Moir, I.K. Sathy-Coraci, J.R. Warner, and I.M. Willis. 2000. Repression of ribosome and tRNA synthesis in secretion-defective cells is signaled by a novel branch of the cell integrity pathway. *Mol. Cell Biol.* 20:3843–3851.
- Loeb, J.D., G. Schlenstedt, D. Pellman, D. Kornitzer, P.A. Silver, and G.R. Fink. 1995. The yeast nuclear import receptor is required for mitosis. *Proc. Natl. Acad. Sci. USA.* 92:7647–7651.
- Longtine, M.S., A. McKenzie III, D.J. Demarini, N.G. Shah, A. Wach, A. Brachat, A. Philippsen, and J.R. Pringle. 1998. Additional modules for versatile and economical PCR-based gene deletion and modification in *Saccharomyces cerevisiae*. *Yeast.* 14:953–961.
- Martin, T.F. 1998. Phosphoinositide lipids as signaling molecules: common themes for signal transduction, cytoskeletal regulation, and membrane trafficking. *Annu. Rev. Cell Dev. Biol.* 14:231–264.
- Michell, R.H., N.M. Perera, and S.K. Dove. 2003. New insights into the roles of phosphoinositides and inositol polyphosphates in yeast. *Biochem. Soc. Trans.* 31:11–15.
- Miller, A.L., M. Suntharalingam, S.L. Johnson, A. Audhya, S.D. Emr, and S.R. Wente. 2004. Cytoplasmic inositol hexakisphosphate production is sufficient for mediating the Gle1-mRNA export pathway. *J. Biol. Chem.* 279:51022–51032.
- Nanduri, J., and A.M. Tartakoff. 2001. The arrest of secretion response in yeast: signaling from the secretory path to the nucleus via Wsc proteins and Pkc1p. *Mol. Cell.* 8:281–289.
- Nanduri, J., S. Mitra, C. Andrei, Y. Liu, Y. Yu, M. Hitomi, and A.M. Tartakoff. 1999. An unexpected link between the secretory path and the organization of the nucleus. *J. Biol. Chem.* 274:33785–33789.
- Nikolaev, I., M.F. Cochet, and B. Felenbok. 2003. Nuclear import of zinc binuclear cluster proteins proceeds through multiple, overlapping transport pathways. *Eukaryot. Cell.* 2:209–221.
- Odom, A.R., A. Stahlberg, S.R. Wente, and J.D. York. 2000. A role for nuclear inositol 1,4,5-trisphosphate kinase in transcriptional control. *Science.* 287:2026–2029.
- Pryciak, P.M., and F.A. Huntress. 1998. Membrane recruitment of the kinase cascade scaffold protein Ste5 by the Gβ-γ complex underlies activation of the yeast pheromone response pathway. *Genes Dev.* 12:2684–2697.
- Rao, V.D., S. Misra, I.V. Boronenkov, R.A. Anderson, and J.H. Hurley. 1998. Structure of type IIβ phosphatidylinositol phosphate kinase: a protein kinase fold flattened for interfacial phosphorylation. *Cell.* 94:829–839.
- Reinke, C.A., P. Kozik, and B.S. Glick. 2004. Golgi inheritance in small buds of *Saccharomyces cerevisiae* is linked to endoplasmic reticulum inheritance. *Proc. Natl. Acad. Sci. USA.* 101:18018–18023.
- Sata, M., J.G. Donaldson, J. Moss, and M. Vaughan. 1998. Brefeldin A-inhibited guanine nucleotide-exchange activity of Sec7 domain from yeast Sec7 with yeast and mammalian ADP ribosylation factors. *Proc. Natl. Acad. Sci. USA.* 95:4204–4208.
- Schnieders, E.A. 1996. Biochemical and genetic analysis of a phosphatidylinositol 4-kinase (PIK1 gene product) in the yeast *Saccharomyces cerevisiae*. Ph.D. thesis. University of California, Berkeley, Berkeley, CA. 185 pp.
- Sciorra, V.A., A. Audhya, A.B. Parsons, N. Segev, and C. Boone. 2005. Synthetic genetic array analysis of the PtdIns 4-kinase Pik1p identifies components in a Golgi-specific Ypt31/rab-GTPase signaling pathway. *Mol. Biol. Cell.* 16:776–793.
- Shelton, S.N., B. Barylko, D.D. Binns, B.F. Horazdovsky, J.P. Albanesi, and J.M. Goodman. 2003. *Saccharomyces cerevisiae* contains a Type II phosphoinositide 4-kinase. *Biochem. J.* 371:533–540.
- Shen, X., H. Xiao, R. Ranallo, W.H. Wu, and C. Wu. 2003. Modulation of ATP-dependent chromatin-remodeling complexes by inositol polyphosphates. *Science.* 299:112–114.
- Sherman, F., G.R. Fink, and J.A. Hicks. 1986. Appendix A. *In* Laboratory Course Manual for Methods in Yeast Genetics. Cold Spring Harbor Laboratory Press. Cold Spring Harbor, NY. 163–167.
- Shulewitz, M.J., C.J. Inouye, and J. Thorner. 1999. Hsl7 localizes to a septin ring and serves as an adapter in a regulatory pathway that relieves tyrosine phosphorylation of Cdc28 protein kinase in *Saccharomyces cerevisiae*. *Mol. Cell Biol.* 19:7123–7137.
- Sikorski, R.S., and P. Hieter. 1989. A system of shuttle vectors and yeast host strains designed for efficient manipulation of DNA in *Saccharomyces cerevisiae*. *Genetics.* 122:19–27.
- Stade, K., C.S. Ford, C. Guthrie, and K. Weis. 1997. Exportin 1 (Crm1p) is an essential nuclear export factor. *Cell.* 90:1041–1050.
- Steger, D.J., E.S. Haswell, A.L. Miller, S.R. Wente, and E.K. O'Shea. 2003. Regulation of chromatin remodeling by inositol polyphosphates. *Science.* 299:114–116.
- Strahl, T., B. Grafelmann, J. Dannenberg, J. Thorner, and O. Pongs. 2003. Conservation of regulatory function in calcium-binding proteins: Human frequenin (neuronal calcium sensor-1) associates productively with yeast phosphatidylinositol 4-kinase isoform, Pik1. *J. Biol. Chem.* 278:49589–49599.
- Strom, A.C., and K. Weis. 2001. Importin-beta-like nuclear transport receptors. *Genome Biol.* 10:1186/gb-2001-2-6-reviews3008.
- Walch-Solimena, C., and P. Novick. 1999. The yeast phosphatidylinositol-4-OH kinase Pik1 regulates secretion at the Golgi. *Nat. Cell Biol.* 1:523–525.
- Wang, Y.J., J. Wang, H.Q. Sun, M. Martinez, Y.X. Sun, E. Macia, T. Kirchhausen, J.P. Albanesi, M.G. Roth, and H.L. Yin. 2003. Phosphatidylinositol 4 phosphate regulates targeting of clathrin adaptor AP-1 complexes to the Golgi. *Cell.* 114:299–310.
- Xiao, Z., J.T. McGrew, A.J. Schroeder, and M. Fitzgerald-Hayes. 1993. *CSE1* and *CSE2*, two new genes required for accurate mitotic chromosome segregation in *Saccharomyces cerevisiae*. *Mol. Cell Biol.* 13:4691–4702.
- York, J.D., A.R. Odom, R. Murphy, E.B. Ives, and S.R. Wente. 1999. A phospholipase C-dependent inositol polyphosphate kinase pathway required for efficient messenger RNA export. *Science.* 285:96–100.
- York, S.J., B.N. Armbruster, P. Greenwell, T.D. Petes, and J.D. York. 2005. Inositol diphosphate signaling regulates telomere length. *J. Biol. Chem.* 280:4264–4269.
- Yoshida, S., Y. Ohya, M. Goebel, A. Nakano, and Y. Anraku. 1994. A novel gene, *STT4*, encodes a phosphatidylinositol 4-kinase in the PKC1 protein kinase pathway of *Saccharomyces cerevisiae*. *J. Biol. Chem.* 269:1166–1172.